
RISO Printer Driver

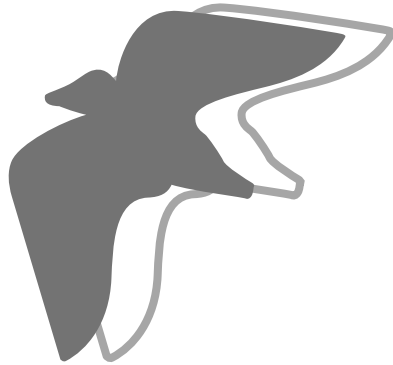
USER'S GUIDE for RZ2/RZ3/RZ5 Series

Windows 98SE/Me

Windows NT4.0

Mac OS 9

Mac OS X



RISO

This document is intended for use by RISO, its authorized dealers and purchasers of the equipment described herein. While every effort has been made to insure the accuracy of information contained in this document, RISO, its authorized dealers and their employees shall not be held responsible for any inaccuracies it may contain.

ALL SPECIFICATIONS ARE SUBJECT TO CHANGE WITHOUT NOTICE.

The screens used in this manual are now under development. Therefore, they might be different from the actual screens.

Reproduction or copying of this manual or any parts without permission is strictly prohibited. Although every effort has been made to ensure that the contents of this manual are error-free, please contact us if you notice any errors or other points which should be brought to the company's attention.

Copyright © 2007 RISO KAGAKU CORPORATION, JAPAN

- Apple®, Macintosh® and Mac OS® are trademarks of Apple Computer, Inc., registered in the U.S.A. and other countries.
- Microsoft®, Windows® and Windows NT® are trademarks of Microsoft Corporation in the U.S.A. and other countries.
- Product names and company names that are referenced in this guide are (registered) trademarks of respective companies.

Preface

Welcome to the high-speed PC printing field presented by RISO printers through RISO printer drivers.

The RISO printers, which are designed to operate as a high-speed GDI printer, enable you to print various documents you create on different computer platforms very speedily, only if an appropriate RISO printer driver is installed in your computer.

The GDI printer, as you know, uses the bit-mapped image data developed on your PC monitor screen as print data source, enabling you to print the exactly same image as of what you see on your PC monitor screen in most cases. Besides, it requires no printer font to print document, thus relieving you of the restrictions on the use of fonts when you create documents on your PC.

The RISO printers can also operate as a network printer under various LAN environments, with an additional network interface card embedded inside.

About this User's Guide

This user's guide is divided into the individual sections for the following different computer system platforms : Windows (98SE/Me/NT4.0) and Macintosh.

In each section, you can find detailed descriptions about how to install the printer driver into your computer and print documents created on your computer.

Besides, the troubleshooting tips are provided to help you in case you have any problem in printing operation.

Read the section which corresponds to your computer system platform before printing your document file on your RISO printer or whenever you have questions in operation.

The expressions which are used in the UK-ENGLISH printer driver program and different from those used in the US-ENGLISH one are given in the brackets.

About the Guide Signs

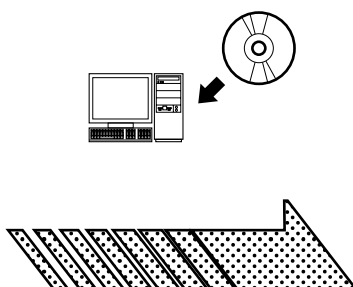
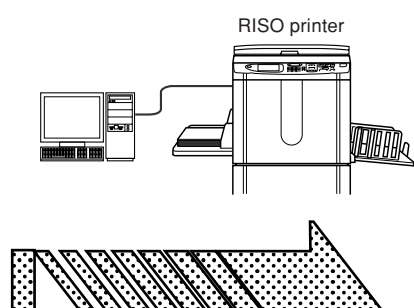
The following advice signs are given to the descriptions which will help a user to avoid unexpected troubles and obtain the optimum performance of this product.

- **Important !**
Gives you helpful advice for trouble-free operation.
- **NOTE** Gives you tips for more effective use of this product.

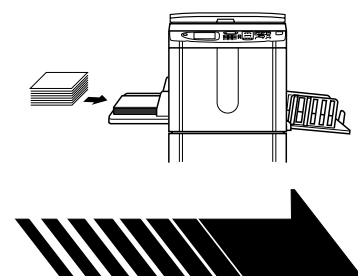
Procedure before printing

Before you use the printer at the first time, carry out the installation procedure below.
After installation, follow the basic operation procedure. Then, you can print out the documentation data.

Installation (When the printer is used at the first time)



Basic operation



1 Connecting your computer with the RISO printer

Connect your computer with the RISO printer.

- Read the user's guide of the RISO printer thoroughly.

2 Installing the printer driver

Install the RISO Printer Driver into your computer.

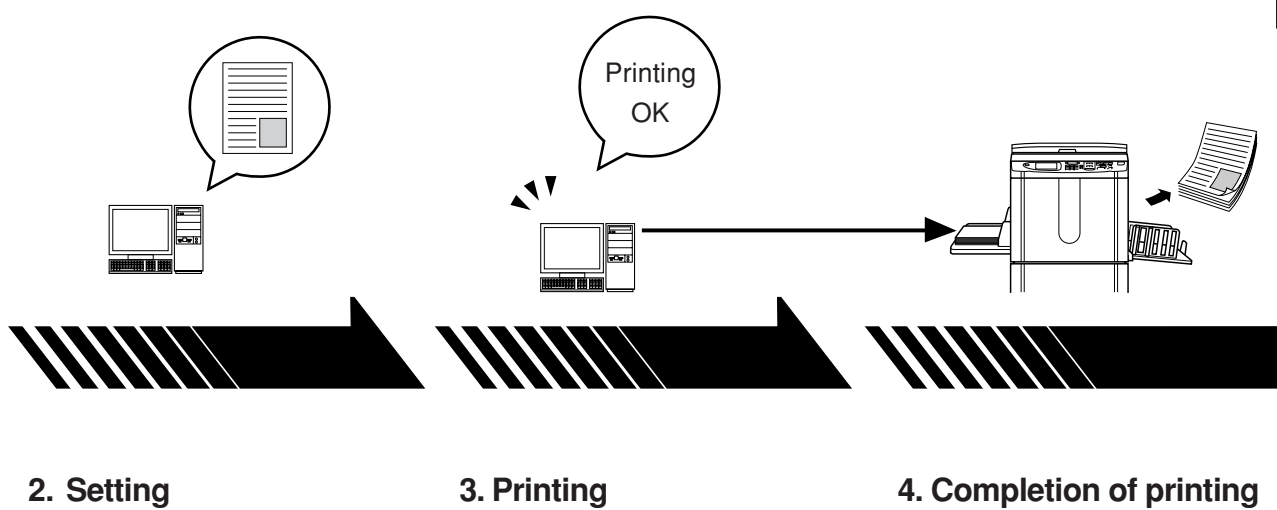
Windows 98SE/Me ➞ [Page 25](#)
Windows NT4.0 ➞ [Page 30](#)
Mac OS 9 ➞ [Page 55](#)
Mac OS X ➞ [Page 78](#)

1. Preparing for the printer

Prepare for the printer and put the print paper suitable for the original data to be printed out onto the standard (multipurpose) tray.

- For the preparation method for the printer, read the user's guide of the RISO printer.


Basic operation



Open the data you want to print out with your computer and make settings for printing.

Windows  [Page 8](#)

Mac OS 9  [Page 36](#)

Mac OS X  [Page 57](#)

Open the [Print] dialog box on your PC and click on the [OK] button. The data is transmitted to the printer.

The printer receives the data and makes master and prints out the data.

Table of Contents

Preface	2
Procedure before printing	3
Table of Contents	5

Printing from Windows

Sending and Printing Data	8
Creating a RISORINC-format file	10
Setting the Print Conditions	11
[Guide] Tab	12
[Image] Tab	15
[Extensions] Tab	18
Registering Custom Paper Sizes as Standard	20
Button Functions in [Custom Paper List] Dialog Box	22
Changing the Printer Driver Configuration	23
Installing the Printer Driver <Windows 98SE/Me> ...	25
Installing the Printer Driver <Windows NT4.0>	30

Printing from Mac OS

■ Printer Driver for Mac OS 9	36
Sending and Printing Data	36
Selecting the Current Printer	38
Creating a RISORINC-format file	40
Setting the Print Conditions	41
[Page Setup] Dialog Box	42
[Printer Setup] Dialog Box	44
[Coloring (Colouring)] Dialog Box	45
[Printer Options] Dialog Box	46
Registrating Custom Paper Sizes as Standard	48
Button Functions in [Paper Editor] Dialog Box	51
Button Functions in [Paper Editor-Add/Edit] Dialog Box	52
Changing the Printer Driver Configuration	53
Finding Information about the Printer Driver	54
Installing the Printer Driver	55

■ Printer Driver for Mac OS X	57
Sending and Printing Data	57
Add the printer to the printer list -Mac OS X 10.3- ...	59
Add the printer to the printer list -Mac OS X 10.4- ...	59
Dialog Box Settings	60
Mac OS settings	60
Copies & Pages	60
Layout	61
Output Options	62
Scheduler	62
Paper Handling	63
Color Sync	63
RISO Printer Driver Settings	64
Printer Setup	64
Storage Tag	66
Coloring	67
Printer Options	69
Photo processing	71
Summary	72
Changing the Printer Driver Configuration	73
Configuration	73
Print Color Entry	74
Register frequently used custom paper size	75
Finding Version Number of the Printer Driver	77
Installing the Printer Driver	78

Appendix

Troubleshooting Tips	81
Error Message on Windows PC's Display	81
Operation Problems	82

Printing from **Windows**

Sending and Printing Data	8
Creating a RISORINC-format file	10
Setting the Print Conditions	11
[Guide] Tab	12
[Image] Tab	15
[Extensions] Tab	18
Registering Custom Paper Sizes as Standard ...	20
Button Functions in	
[Custom Paper List] Dialog Box	22
Changing the Printer Driver Configuration	23
Installing the Printer Driver	
<Windows 98SE/Me>	25
Installing the Printer Driver	
<Windows NT4.0>	30

Sending and Printing Data

Follow the procedures given below to print out document data directly on your RISO printer.

If the corresponding RISO printer driver has not been installed in your computer yet, install it first, referring to the section “Installing the Printer Driver” on [page 25](#) or [30](#).

1 Turn on your RISO printer and load paper.

Load paper whose size is the same as defined in the document file to be printed.

2 Turn on your computer and start Windows.

3 Open the document file to be printed.

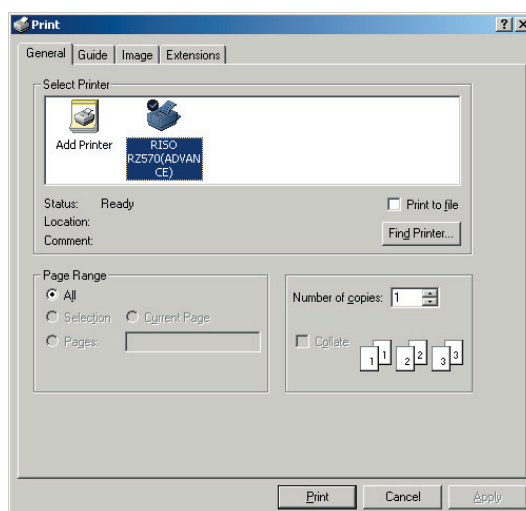
NOTE Always select [RISO...] as [Default Printer] before you open or create a document file to be printed. Otherwise, the document might not be printed properly.

4 Specify the print job in the [Print] dialog box.

Select [Print] in the [File] menu to open the [Print] dialog box.

NOTE Never fail to deselect the [Collate] box. If it is selected, the master-making operation will be repeated for every copy.

The displayed items in the [Print] dialog box vary depending on the application software.



[Printer]

Make sure that [Printer] is set to [RISO...]. If not, click on the [▼] bar in the [Name] box and select it from the installed printer's list.

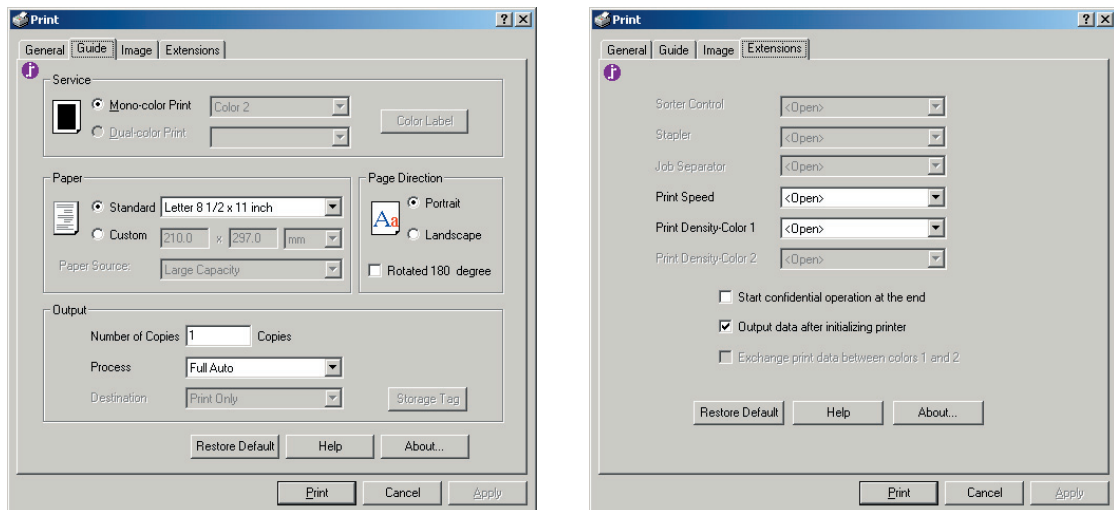
[Copies]

Specify the number of copies to be printed within the following range : 1 to 9,999.

If you want to set additional print conditions for the current print job ;

Open the [Properties] dialog box by clicking on the [Properties] button in the [Print] dialog box.

For the detailed description of this dialog box, see [pages 12 to 19](#).



5

Start printing.

Click on the [OK] button in the [Print] dialog box.

The selected document file data is then transmitted to your RISO printer and printed out there as specified in the previous step.

NOTE The maximum print area is different depending on the model of RISO printer. If you want to know the maximum print area of your document, consult the user's guide of your RISO printer.

Creating a RISORINC-format file

It is necessary to create a RISORINC-format file before sending data via FTP with RISORINC-NET.

NOTE A RISORINC-format file can only be used with RISO printers.

All settings made in the printer driver are saved with the file.

1

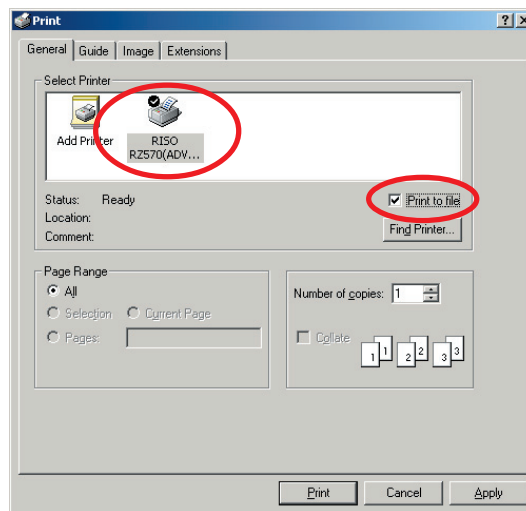
Open a document file and specify the print job in the [Print] dialog box.

Select [Print] in the [File] menu to open the [Print] dialog box.

2

Confirm that [RISO...] is selected in the [Printer] field in the [Print] dialog box.

The selected [RISO...] should correspond to the RISO printer model to which your document file is to be transmitted. Otherwise, the transmitted document data may not be printed out correctly on the target RISO printer.



3

Output the document data to a file.

Select the corresponding check box, ex. [Print to file], and click on the [OK] button. Then specify the name and the destination for the RISORINC-format file to be created in the displayed dialog box and click on the [OK] or [Save] button.

NOTE • If the corresponding check box does not exist in the [Print] dialog box, change the printer driver configuration.

Open the [Properties] dialog box from the [Printers] folder and select "File" in the [Print to the following port] list in the [Details] or [Ports] tab. Then open the [Print] dialog box and click on the [OK] button.

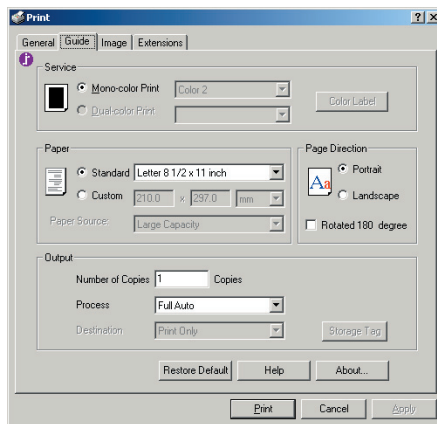
Setting the Print Conditions

You can set various print conditions over the tabs in the [Properties] dialog box.

To open this dialog box, click on the [Properties] button in the [Print] dialog box.

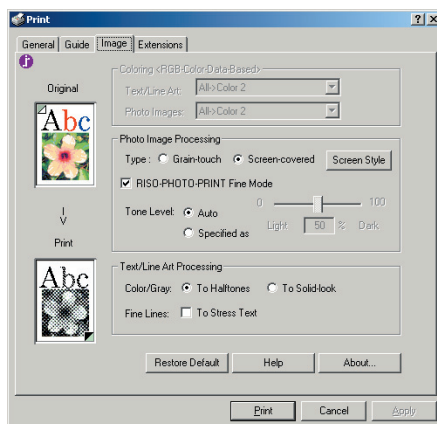
NOTE Refer to the document of Windows and other associated applications for how to use the other tabs of this dialog box.

[Guide] Tab



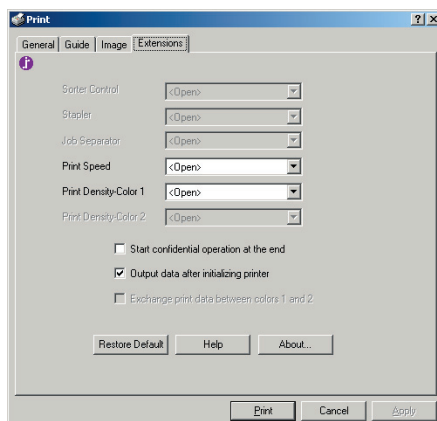
1. Service*
2. Paper
3. Paper Source*
4. Page Direction
5. Rotated (Rotate 180°)
6. Number of Copies
7. Process
8. Destination*
9. [Restore Default] button
10. [Help] button
11. [Pop-up Help] button
12. [About] button

[Image] Tab



1. Coloring <RGB-Color-Data-Based>*
(Colouring <RGB-Colour-Data-Based>)
2. Type-Photo Image Processing-
3. [Screen Style] button
4. RISO-PHOTO-PRINT Fine Mode
5. Tone Level
6. Color/Gray (Colour/Grey)-Text/Line Art Processing-
7. Fine Lines
8. [Restore Default] button
9. [Help] button
10. [Pop-up Help] button
11. [About] button

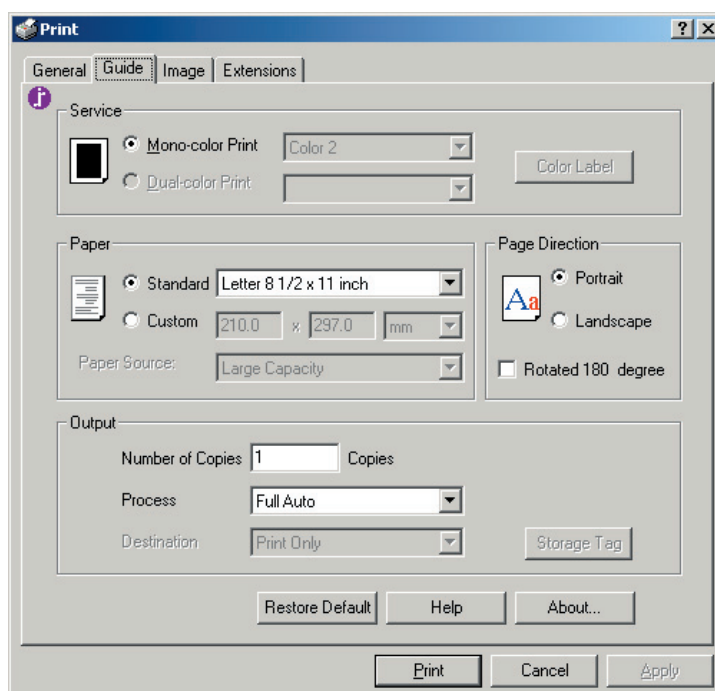
[Extensions] Tab



1. Sorter Control*
2. Stapler*
3. Job Separator
4. Print Speed
5. Print Density
6. Start confidential operation at the end
7. Output data after initializing printer
8. Exchange print data between colors (colours) 1 and 2*
9. [Restore Default] button
10. [Help] button
11. [Pop-up Help] button
12. [About] button

*: These options are not available on the printer which you are using.

[Guide] Tab



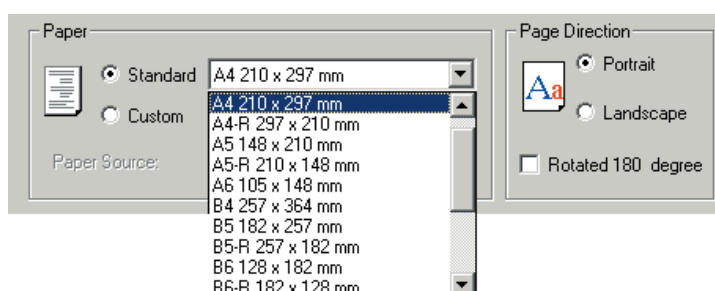
Service <This option is not available on the printer which you are using.>

Paper

You can specify a desired paper size in either “Standard” or “Custom” box as a frequently-used one. The factory-set paper size is “Standard: Letter 8 1/2 × 11 inch” or “A4 210 × 297mm”.

– Changing the standard paper size setting

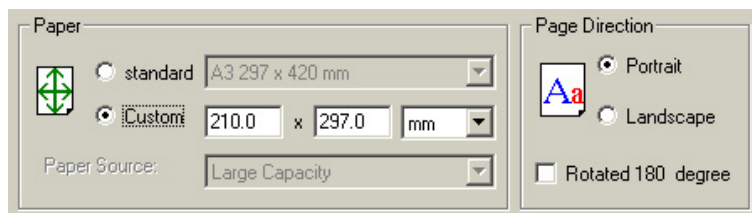
When using any other standard size of paper than the displayed one, click on the [▼] bar to display a list of paper sizes and select a desired one by highlighting it.



NOTE When paper is fed with the wide edge first, select the paper size whose name contains the word “-R”.

– Changing the custom paper size setting

When using any other custom-size paper than the displayed one, enter its width and length in the boxes. If desired to change the unit of length from “inch” to “mm”, click on the [▼] bar next the same box and highlight [mm].



- NOTE**
- The range of paper size you can specify here depends on the specifications of your RISO printer.
 - You can name custom-size paper and register it in the list of standard paper sizes. See “Registering Custom Paper Sizes as Standard” on [page 20](#) for the registration procedure.

Paper Source <This option is not available on the printer which you are using.>

Page Direction

You are required to select the same page direction as of original document data here. The factory-set page direction is “Portrait”.

When paper is fed with the wide edge first, however, the page direction specified here should be opposite to that of original document data, i.e. “Portrait” to “Landscape” and “Landscape” to “Portrait”.

NOTE When paper is fed with the wide edge first, the paper size whose name contains the word “-R” is selected in the [Paper] field to the left.

Rotated (Rotate 180°)

You can rotate print images by 180 degrees by activating this option. Select the check box to activate it. This option is useful when the page direction is required to be changed for stapling printed copies or printing on the media whose feeding direction is limited to one way, such as envelopes.

IMPORTANT!

This option is also available on the control panel of your RISO printer. Make sure it is not activated on both sides at the same time. If it is, this option will be canceled.

Number of Copies

You can use this field to specify the number of copies if no field is prepared for print quantity entry in your application software. When the number of copies can be specified in the [Print] dialog box of the application software, on the other hand, you can ignore this setting because it has no effect on printing operation.

Process

You can specify how to process your print jobs on your RISO printer, i.e. to complete them without interruption or to interrupt them after a specified process step. By interrupting your print jobs, you can check print position and quality with test prints before printing process or change the print job flow according to your print requirements. Click on the [▼] bar and select a desired process flow from the displayed list. The available process flows are as follows :

Full Auto:

To complete print jobs without operator involvement on your RISO printer. No pause is made between master-making and printing processes until the end of print jobs.

Semi-Auto (Print):

To interrupt print jobs before each master-making process, thus allowing you to handle a stack of printed copies, especially for duplex printing.

Semi-Auto (Master):

To interrupt print jobs before each printing process, thus allowing you to check a sample print.

Manual:

To interrupt print jobs before each process step, i.e. both master-making and printing processes.

NOTE This option is not available when you select "Storage Only" as data destination in the field below.

Destination <This option is not available on the printer which you are using.>

[Restore Default] button

Returns the settings on this tab to the default settings.

[Help] button

Displays help information.

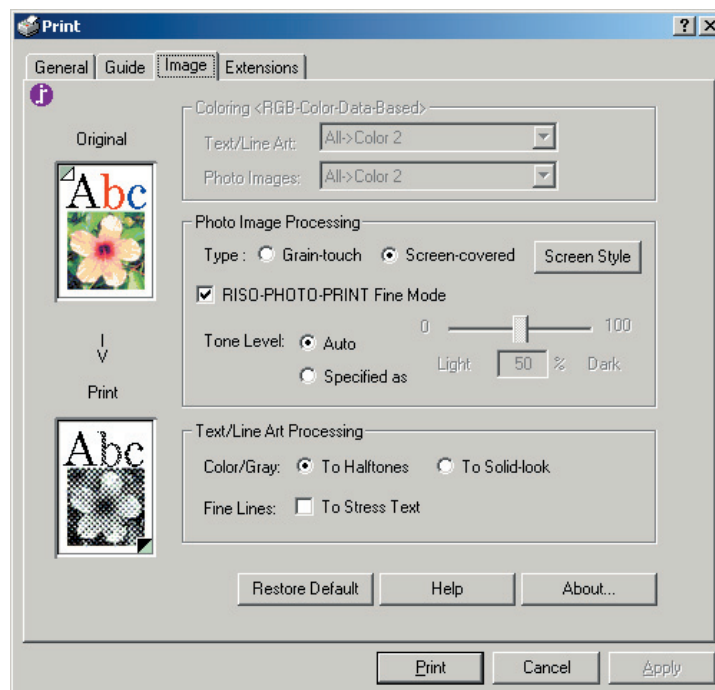
[Pop-up Help] button

If you click on the ? button, [?] shows up on the mouse-cursor. Click on the characters (or function names) with the [?] mouse-cursor, then corresponding tips will pop up.

[About...] button

Opens the [About...] dialog box, in which the version number of the printer driver can be checked. In case you contact your service representative due to function errors, check this version number beforehand.

[Image] Tab



Coloring <RGB-Color-Data-Based> (Colouring <RGB-Colour-Data-Based>)

<This option is not available on the printer which you are using.>

Type – Photo Image Processing —

You can select either of the following two styles in printing out photo images in your document data. The print result of the selected style of photo images is previewed on the screen.

Grain-touch:

Various tones of photo images are reproduced by changing the number of dots in an area according to original density. The printed-out photo images will have grain-touch appearance.

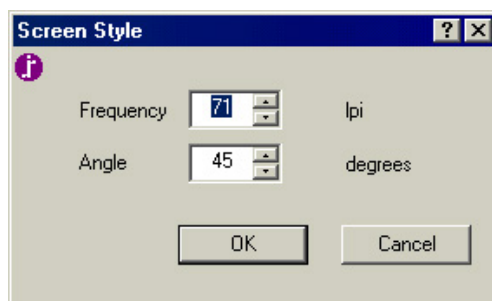
Screen-covered:

Various tones of photo images are reproduced by changing the size of dots according to original density. The printed-out photo images will be covered with a dot screen.

Though the wide range of tone levels in original photo images can be kept in this style, their fineness will be lowered.

[Screen Style] button

Opens the [Screen Style] dialog box, in which you can specify the style of the screen to be applied in reproducing photo images. Two screen parameters, frequency and angle, can be specified here.



Frequency:

The fineness of a screen, which is indicated by the number of lines per inch (= 25.4mm).

The available value range is between 38 and 200 lpi. The default value is 71 lpi.

Angle:

The direction in which a screen is applied to photo images.

The available value range is between 0 and 90 degrees. The default value is 45 degrees.

RISO-PHOTO-PRINT Fine Mode

This image processing mode is originally developed by RISO, in order to reproduce photo images while keeping their original fineness as well as possible.

You can activate this mode by selecting the corresponding check box, which is selected as default.

Tone Level

You can adjust the tone level of original photo images to obtain an optimum photo tone in prints. The tone level is adjusted to "Auto" as default.

Auto:

The tone level of original photo images is automatically adjusted to compensate for their tone unbalance.

Specified as:

The tone of original photo images can be changed according to your needs by shifting the pointer on the sliding bar or directly entering a desired value into the corresponding field.

Shift the pointer toward "0%" if you want to make the photo tone lighter and toward "100%" if you want to make it darker. 100 steps of tone level are available.

Color/Gray (Colour/Grey) – Text/Line Art Processing –

You can select either of the following two styles in printing out colored or gray texts/line-art images in your document data.

To Halftones:

The color difference of texts and line-art images can be reproduced as tone difference on prints.

To Solid-look:

The color difference of texts and line-art images is not reflected on prints and all images are to be reproduced as solid ones there.

Fine Lines - To Stress Text

You can sharpen the outlines of texts, especially small characters, by selecting this option.

[Restore Default] button

See [page 14](#).

[Help] button

See [page 14](#).

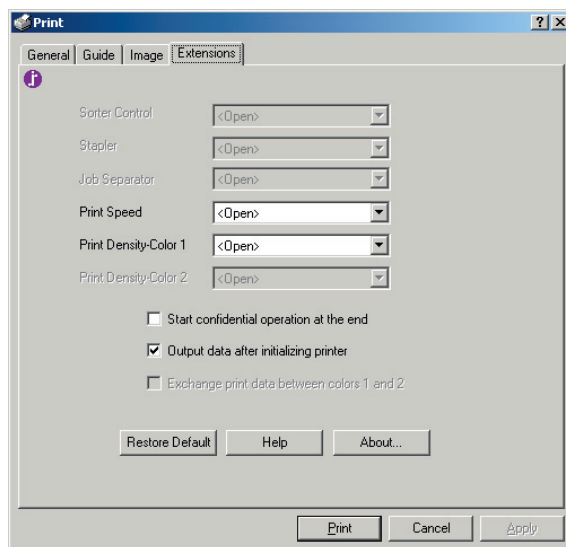
[Pop-up Help] button

See [page 14](#).

[About...] button

See [page 14](#).

[Extensions] Tab



Sorter Control <This option is not available on the printer which you are using.>

Stapler <This option is not available on the printer which you are using.>

Job Separator

You can activate the Job separator on your RISO printer and select the timing of separation tape insertion. Click on the [▼] bar and select a desired option from the displayed list. The separation tapes can be inserted “between documents” or “between pages”. The factory-set option is “<Open>”, which lets the Job separator operate as specified on the control panel of your RISO printer. If you do not want to use the Job separator, select “OFF”.

NOTE This option is available only when the installation of the Job separator is confirmed in the [Configuration] or [Device Settings] tab. → See [page 23](#).

Print Speed

You can select the print speed of your RISO printer. Click on the [▼] bar and select a desired speed level from the displayed list. 5 levels of print speed are available. The factory-set speed level is “<Open>”, which lets your RISO printer operate at the speed level as specified on its own control panel.

Print Density

You can select the print density on your RISO printer. Click on the [▼] bar and select a desired density level from the displayed list. 5 levels of print density are available for the respective colors. The factory-set density level is “<Open>”, which lets your RISO printer print at the density level as specified on its own control panel.

NOTE The Print Density cannot be changed on the RZ2 Series.

Start confidential operation at the end

You can prevent your confidential documents from being duplicated without your knowledge by selecting this check box. When this check box is selected, the remaining master is automatically replaced with a blank one after all specified print jobs are finished.

Output data after initializing printer

Your RISO printer is initialized before receiving print data when this check box is selected. It is recommended to select this check box in most cases.

Exchange print data between colors (colours) 1 and 2

<This option is not available on the printer which you are using.>

[Restore Default] button

See [page 14](#).

[Help] button

See [page 14](#).

[Pop-up Help] button

See [page 14](#).

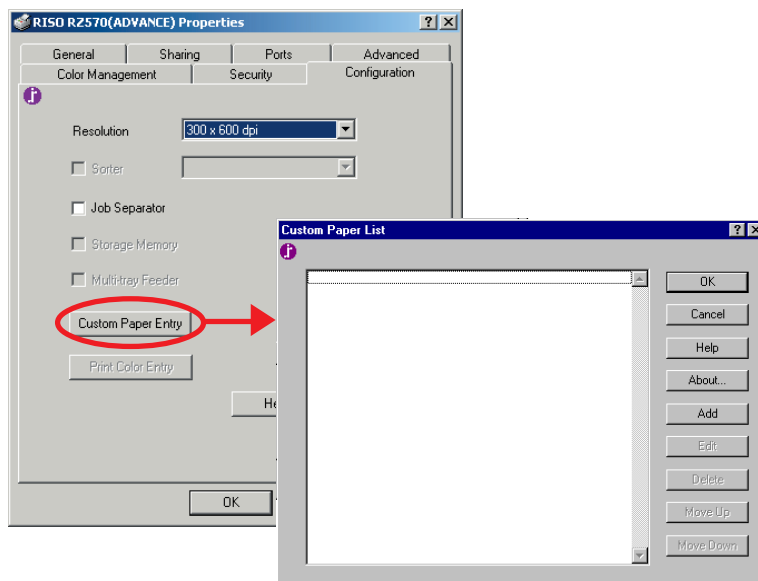
[About...] button

See [page 14](#).

Registering Custom Paper Size as Standard

You can register custom paper sizes as standard in the [Custom Paper List] dialog box, which can be opened by clicking on the [Custom Paper Entry] button in the [Configuration] or [Device Settings] tab of the [Properties] dialog box. The custom paper sizes can be named and entered in the standard paper size list.

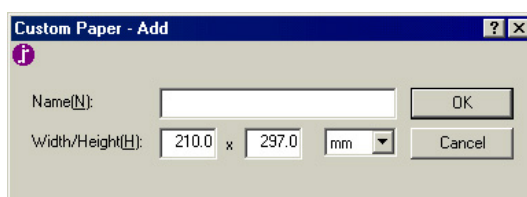
NOTE To open the [Properties] dialog box, open the [Printers] folder in the [Settings] from the [Start] menu, click the right-side mouse key on the corresponding RISO printer icon and select [Properties] from the displayed menu.



1

Click on the [Add] button.

The [Customer Paper - Add] dialog box appears.

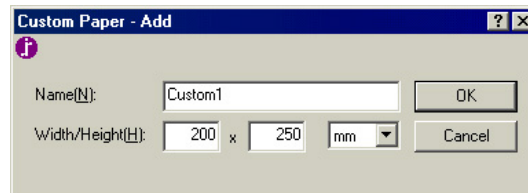


2**Enter a custom paper size and name it.**

The length of the name can be up to 30 characters.

If you wish to change the unit of length from “inch” to “mm”, click on the [▼] bar next to the same box and highlight “mm”.

NOTE ▶ The available minimum paper size is 0.394 inch x 0.394 inch (10.0 mm x 10.0 mm). The maximum paper size varies with the printer you use. For details, see the instruction manual for your printer.

**3****Click on the [OK] button.**

The [Customer Paper - Add] dialog box is closed and the paper size name which has just been registered is added to the [Custom Paper List] dialog box.

Button Functions in [Custom Paper List] Dialog Box

[Add] _____

Allows you to name a desired custom paper size and register it as one of the standard ones. Up to 30 custom paper sizes can be registered.

[Edit] _____

Allows you to change the name and/or dimensions of any custom paper size displayed in the list.

When changing the name and/or dimensions of a custom paper size, select the corresponding name from the list and click on the [Edit] button to open the [Custom Paper - Edit] dialog box, in which you can change the name and dimensions as you wish. Click on the [OK] button to confirm the new name and/or dimensions. The [Custom Paper - Edit] dialog box is then closed and the new name is displayed in the list in place of the selected one if changed.

[Delete] _____

Allows you to delete a selected custom paper size from the list.

When deleting a custom paper size, select the corresponding name from the list and click on the [Delete] button. A dialog box then appears requesting your confirmation. If you confirm it, click on the [OK] button in this dialog box. This dialog box is then closed and the selected custom paper size name is deleted from the list.

[Move Up] _____

Moves the highlighted custom paper size name up one line in the list with each click.

[Move Down] _____

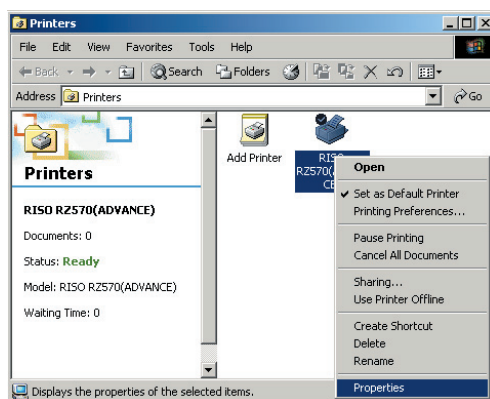
Moves the highlighted custom paper size name down one line in the list with each click.

Changing the Printer Driver Configuration

You are required to change the configuration of the installed printer driver program if your RISO printer is equipped with optional devices, such as sorter and multi-tray paper feeder. If you do not change the printer driver configuration, you will not be able to select the corresponding option when specifying the print conditions of your print job.

1 Open the [Configuration] or [Device Settings] tab of the [Properties] dialog box.

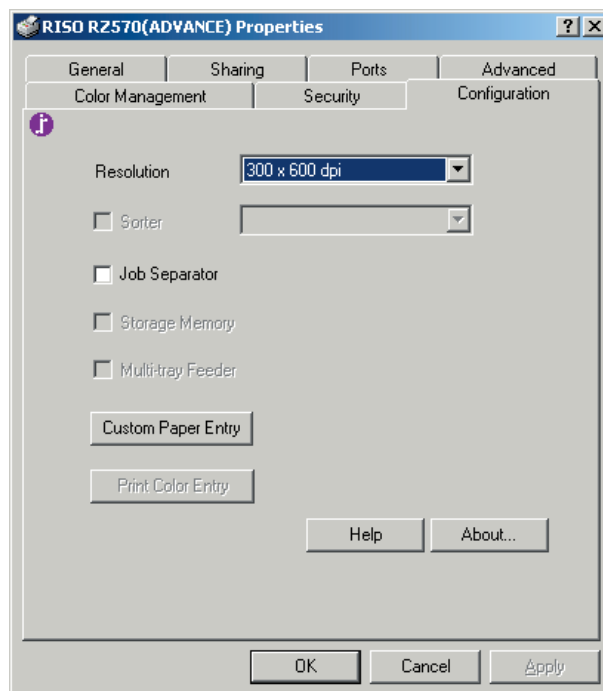
Click the right-hand mouse key on the corresponding RISO printer icon in the [Printers] folder and select [Properties] in the displayed menu. Then click on [Configuration] or [Device Settings] in the [Properties] dialog box.



2

Select the optional devices with which your RISO printer is equipped.

Mark the check boxes of the optional device concerned.

**3**

Click on the [OK] button.

The new printer driver configuration is confirmed and the [Properties] dialog box is closed.

Installing the Printer Driver <Windows 98SE/Me>

You are required to install, in your computer, the corresponding RISO printer driver that enables document data printout on your RISO printer. Refer to the Windows 98SE/Me manuals for more instructions to install the printer driver.

This installation procedure assumes that your computer is directly connected to a RISO printer. If you want to share the RISO printer with another computer over the network, on the other hand, you can select the sharing option of the Windows system. Refer to the Windows 98SE/Me manuals for details about the sharing option. Besides, the dedicated network interface card, RISORINC-NET, is also available as option, if you want to use your RISO printer on the network.

IMPORTANT!

- To use your RISO printer on the network, it is required to assign an IP address to the printer and create the “RISO-PRINT Port” in your computer with the optional utility programs, RISO-ADMIN and RISO-PRINT, before this operation. Refer to the RISORINC-NET User’s Guide.
- When you delete the existing RISO printer driver and re-install it, always reboot your computer before installing the program again.
- RISO printer driver system requirements:
Windows 98SE ... 64MB of RAM or more.
Windows Me 128MB of RAM or more.

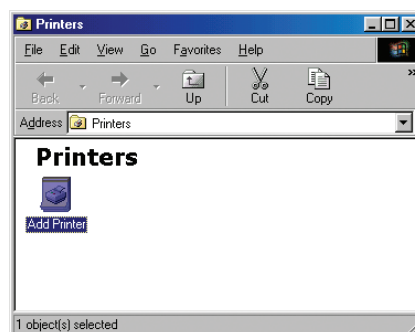
1

Turn on your computer and start Windows.

2

Open the [Printers] folder and start the [Add Printer Wizard].

Click on the [Start], [Settings], then [Printer] buttons to open the [Printers] folder shown below. Then double-click on the [Add Printer] icon to start the [Add Printer Wizard].

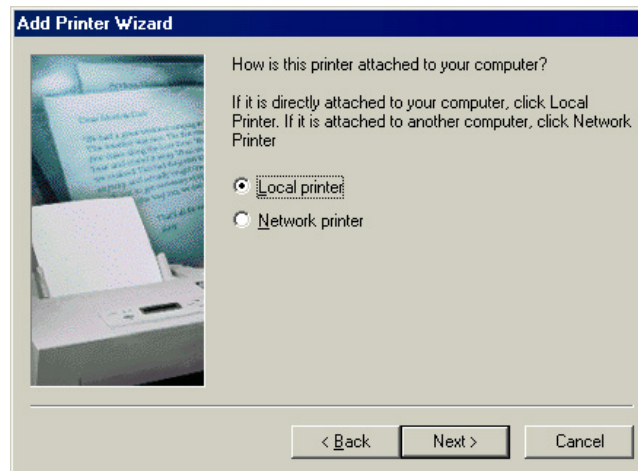


3

Select the printer's destination.

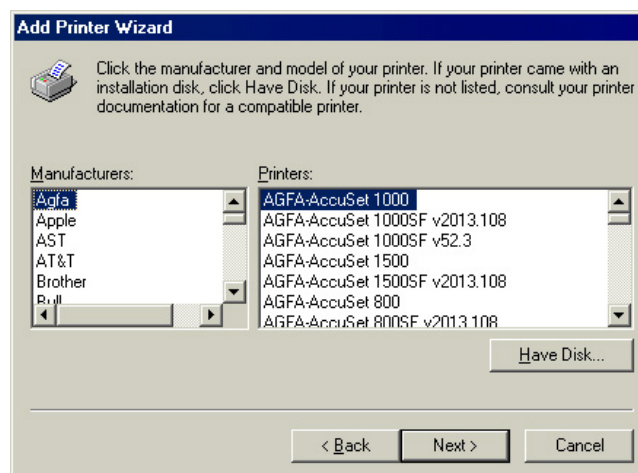
Click on the [Next] button and select [Local printer] as the printer's destination in the screen shown below. Then click on the [Next] button again.

NOTE Even if your RISO printer is connected on network, select [Local printer] here.

**4**

Open the path for the additional printer driver.

Click on the [Have Disk] button in the screen shown below. Then the [Install From Disk] dialog box will appear.



5

Insert the software CD-ROM.

Insert the dedicated software CD-ROM in the CD-ROM drive and click on the [Browse] button in the screen shown below.



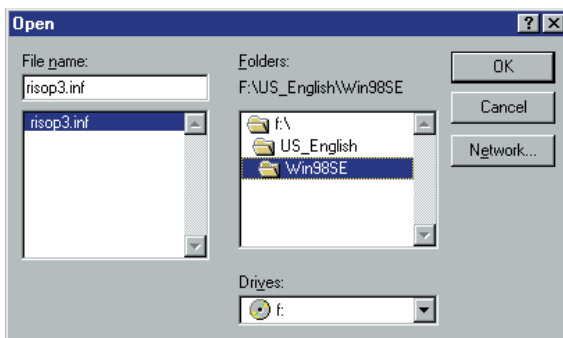
6

Select the file with .inf extension from the printer driver software files to be installed.

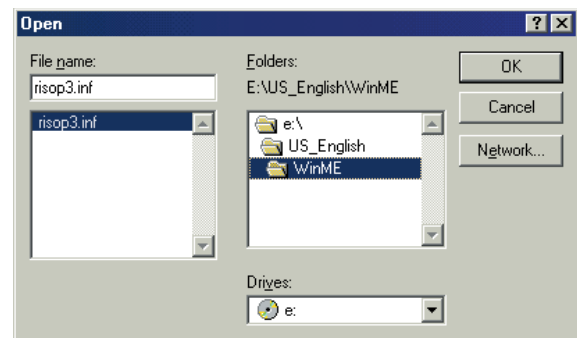
Windows 98SE... [Win98SE] - RISOP3. inf

Windows Me... [WinME] - RISOP3. inf

In the [Open] dialog box, specify the disk drive where the CD-ROM is inserted. The names of the folders which contain different language's printer drivers will then appear in the [Folders] list box. Open the folder of the language you desire for the printer driver. Select the [Win98SE] folder (for Windows 98SE users) or the [WinME] folder (for Windows Me users) then click on the [OK] button.



Windows 98SE

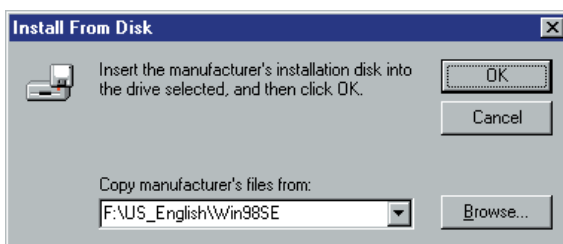


Windows Me

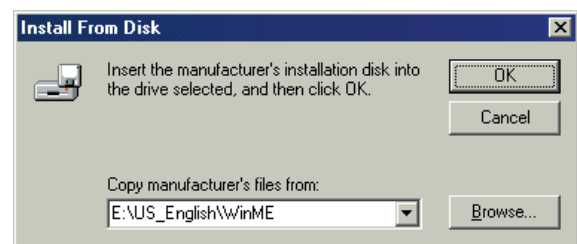
7

The [Install From Disk] dialog box reappears with the name of the selected folder displayed.

Confirm that the selected language is correct and click on the [OK] button. The [Add Printer Wizard] will then reappear.



Windows 98SE

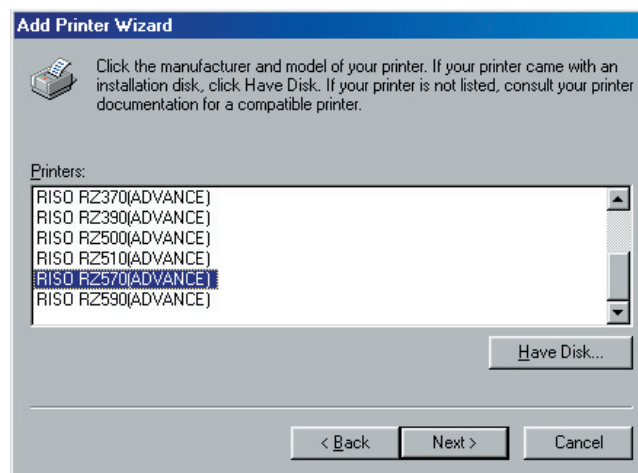


Windows Me

8

Select a printer driver which corresponds to your RISO printer.

Highlight a desired printer driver in the [Printers] box and click on the [Next] button.



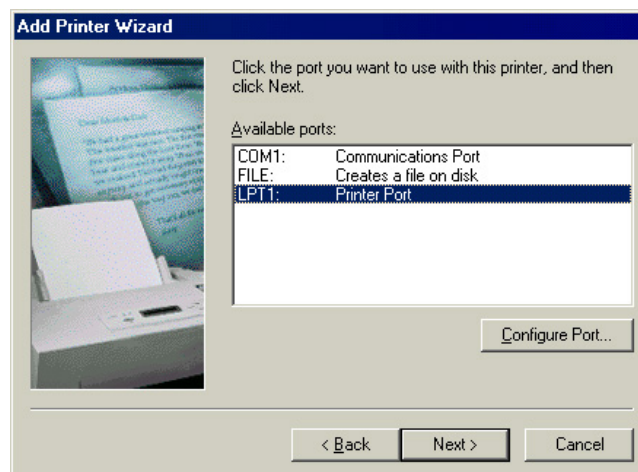
9

Select the printer's port.

When your RISO printer is connected to your computer with a parallel cable, select "LPT1" as the printer's port and click on the [Next] button.

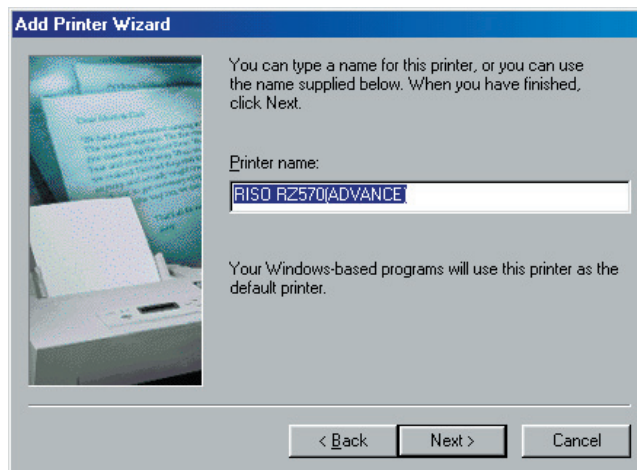
When your RISO printer is connected on network, select the "RISO-PRINT Port" as the printer's port and click on the [Next] button.

NOTE To create the "RISO-PRINT Port", refer to the RISORINC-NET User's Guide.

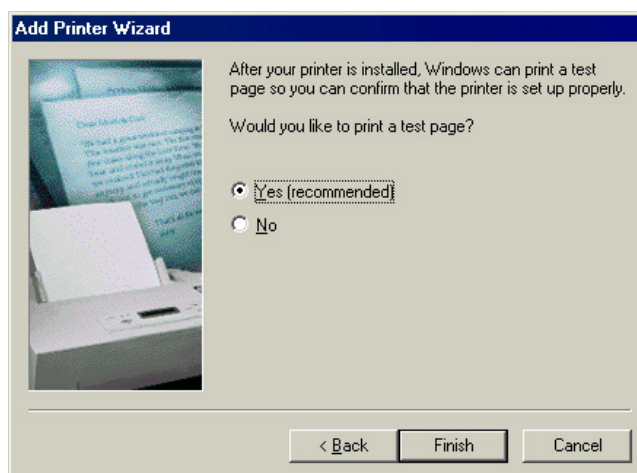


10**Check the name of the added printer and specify it as [Default Printer].**

Confirm that the printer name you selected in Step 8 appears in the [Printer name] box as shown below, and select [Yes] in the section below to set it as the default printer. Then click on the [Next] button.

**11****Select the [a Test Page] option and install the printer driver's file from the CD-ROM.**

Select [Yes] for the question, "Would you like to print a test page?", and click on the [Finish] button. Then, the printer driver's file is copied from the CD-ROM and a test page is printed out. To print out the test pages, turn on your RISO printer, and load paper before clicking on the [Finish] button. If the printer driver is installed properly, the selected RISO printer icon appears in the [Printers] folder.

**12****End the printer driver's installation.**

After the test page is printed out, the checking window appears. Click on the [Yes] button in this window if the test page is properly printed, to finish the printer driver's installation. Then remove the CD-ROM out of the CD-ROM drive.

NOTE Keep the CD-ROM in a safe location.

13**Reboot your computer.**

Installing the Printer Driver <Windows NT4.0>

You are required to install, in your computer, the corresponding RISO printer driver that enables document data printout on your RISO printer. Refer to the Windows NT4.0 manuals for more instructions to install the printer driver.

This installation procedure assumes that your computer is directly connected to a RISO printer. If you want to share the RISO printer with another computer over the network, on the other hand, you can select the sharing option of the Windows system. Refer to the Windows NT4.0 manuals for details about the sharing option. Besides, the dedicated network interface card, RISORINC-NET, is also available as option, if you want to use your RISO printer on the network.

IMPORTANT!

- You are required to have the administrator's privilege to install the printer driver program in your computer.
- When you delete the existing RISO printer driver and re-install it, always reboot your computer before installing the program again.
- RISO printer driver system requirements:
Windows NT4.0 ... 128MB of RAM or more.

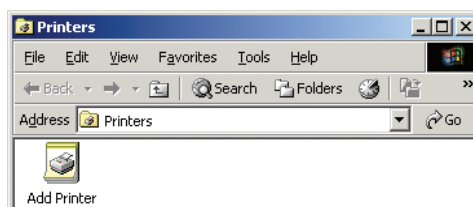
1

Turn on your computer and start Windows.

2

Open the [Printers] folder and start the [Add Printer Wizard].

Click on the [Start], [Settings], then [Printer] buttons to open the [Printers] folder shown below. Then double-click on the [Add Printer] icon to start the [Add Printer Wizard].

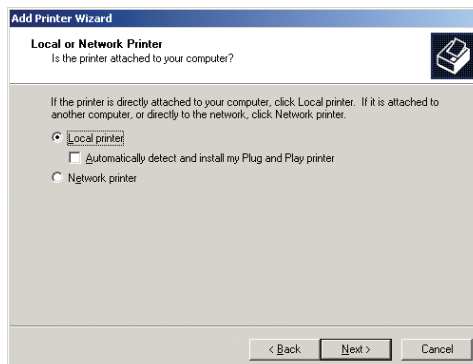


3

Select the printer's manager.

Click on the [Next] button and select [Local Printer] as the printer's manager in the screen shown below. Then click on the [Next] button again.

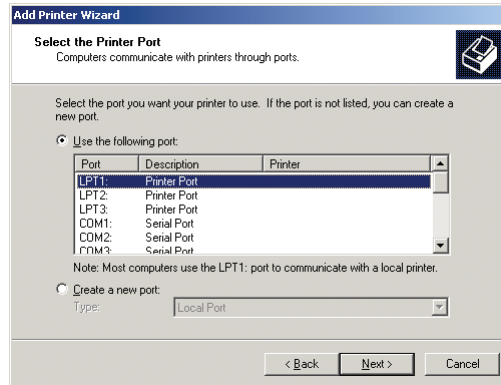
NOTE Even if your RISO printer is connected on network, select [Local printer] here.



4

Select the printer port.

When your RISO printer is connected to your computer with a parallel cable, click on the check box of “LPT1” as the printer’s port and click on the [Next] button.



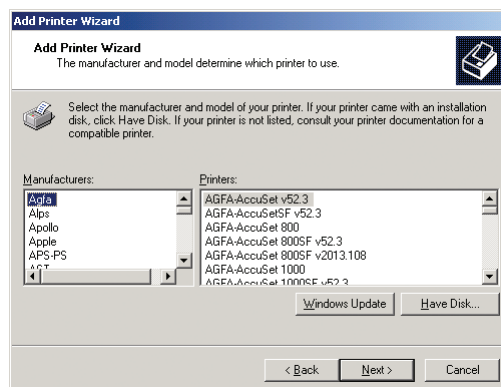
When your RISO printer is connected on network, add a network print port i.e. LPR port.

- 1) Click on the [Add Port] button.
- 2) Select [LPR Port] in the available printer port list and click on the [New Port] button.
- 3) Enter the IP address of your RISO printer. For the Print queue attribute, enter “lp” in lower-case letters in another entry box.
- 4) Click on the [OK] button, and then confirm that the LPR port is selected as above in the [Add Printer wizard] screen and click on the [Next] button.

5

Open the path for the additional printer driver.

Click on the [Have Disk] button in the screen shown below. Then the [Install From Disk] dialog box will appear.



6

Insert the software CD-ROM.

Insert the dedicated software CD-ROM in the CD-ROM drive and click on the [Browse] button in the screen shown below.

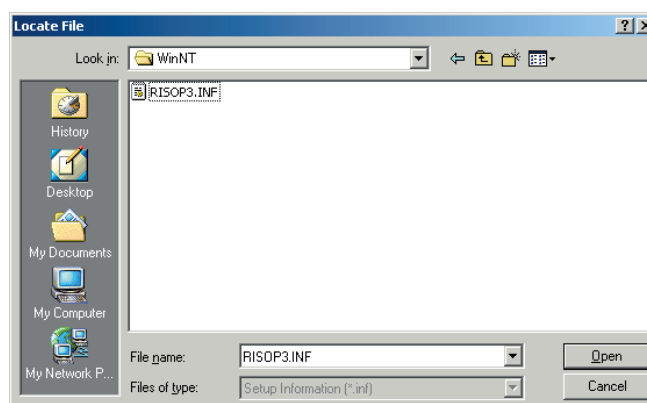


7

Select the file with .inf extension from the printer driver software files to be installed.

Windows NT... [WinNT] - RISOP3.INF

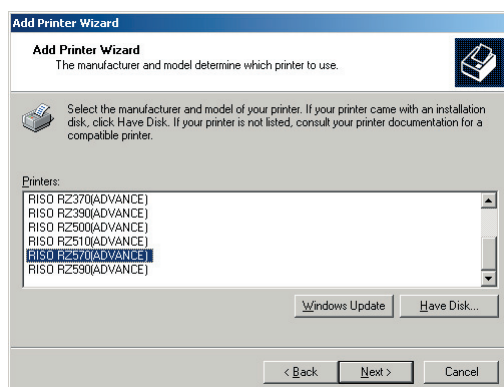
In the [Look in:] list box in the dialog box, select the disk drive where the CD-ROM is inserted. The names of the folders which contain different language printer drivers will then appear in the box. Select the [WinNT] folder containing the printer driver of a desired language, and click on the [Open] button twice. The [Install From Disk] dialog box then reappears with the name of the selected directory displayed. Confirm that the selected folder is correct in this dialog box and click on the [OK] button.



8

Select a printer driver which corresponds to your RISO printer.

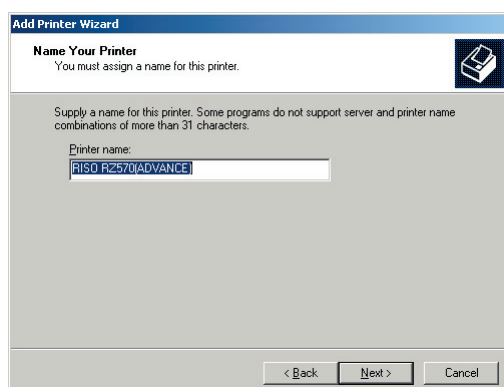
Highlight a desired printer driver in the [Printers] box and click on the [Next] button.



9

Check the name of the added printer and specify it as [Default Printer].

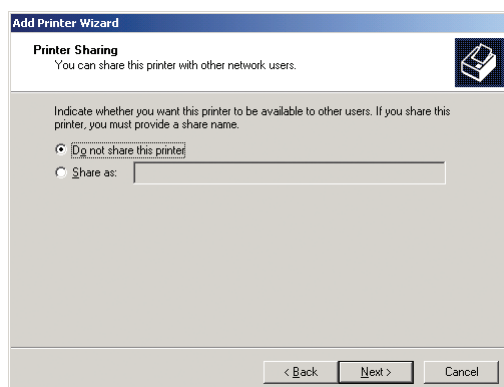
Confirm that the printer name you selected in the previous step appears in the [Printer name] box as shown below, and select [Yes] in the section below to set it as the default printer. Then click on the [Next] button.



10

Specify whether your RISO printer is shared or not.

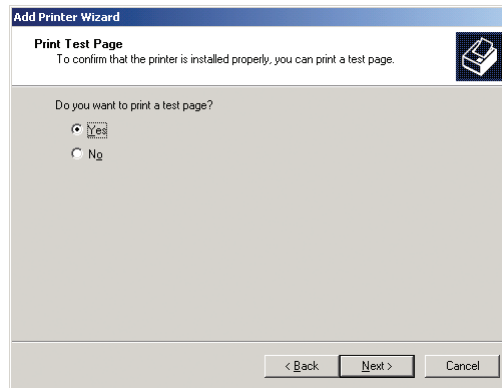
Select "Do not share this printer" and click on the [Next] button.



11**Select the [a Test Page] option and install the printer driver's file from the CD-ROM.**

Select [Yes] for the question, "Do you want to print a test page?", and click on the [Next] button. Then, the printer driver's file is copied from the CD-ROM and a test page is printed out. To print out the test page, turn on your RISO printer, and load paper before clicking on the [Finish] button. If the printer driver is installed properly, the selected RISO printer icon appears in the [Printers] folder.

NOTE The message box [Digital Signature Not Found] will appear. Read the message completely and click on the [Yes] button.

**12****End the printer driver's installation.**

After the test page is printed out, the checking window appears. Click on the [Yes] button in this window if the test page is properly printed, to finish the printer driver's installation. Then remove the CD-ROM out of the CD-ROM drive.

NOTE Keep the CD-ROM in a safe location.

13**Reboot your computer.**

Printing from Mac OS

■ Printer Driver for Mac OS 9	36
Sending and Printing Data	36
Selecting the Current Printer	38
Creating a RISORINC-format file	40
Setting the Print Conditions	41
[Page Setup] Dialog Box	42
[Printer Setup] Dialog Box	44
[Coloring (Colouring)] Dialog Box	45
[Printer Options] Dialog Box	46
Registering Custom Paper Sizes as	
Standard	48
Button Functions in [Paper Editor]	
Dialog Box	51
Button Functions in [Paper	
Editor-Add/Edit] Dialog Box	52
Changing the Printer Driver Configuration	53
Finding Information about the	
Printer Driver	54
Installing the Printer Driver	55
■ Printer Driver for Mac OS X.....	57
Sending and Printing Data	57
Add the printer to the printer list	
-Mac OS X 10.3-	59
Add the printer to the printer list	
-Mac OS X 10.4-	59
Dialog Box Settings	60
Mac OS settings	60
Copies & Pages	60
Layout	61
Output Options	62
Scheduler	62
Paper Handling	63
Color Sync	63
RISO Printer Driver Settings	64
Printer Setup	64
Storage Tag	66
Coloring	67
Printer Options	69
Photo processing	71
Summary	72
Changing the Printer Driver	
Configuration	73
Configuration	73
Print Color Entry	74
Register frequently used custom paper size	75
Finding Version Number of the Printer Driver ...	77
Installing the Printer Driver	78

NOTE Your Macintosh is required to have an Ethernet (RJ45) network port to connect to your RISO printer, in which the optional network interface card, RISORINC-NET, should be embedded.

Printer Driver for Mac OS 9

Sending and Printing Data

Follow the procedures given below to print out document data directly on your RISO printer.

If the corresponding RISO printer driver has not been installed in your Macintosh yet, install it first, referring to the section “Installing the Printer Driver” on [page 55](#).

1 Turn on your RISO printer and load paper.

Load paper whose size is the same as defined in the document file to be printed.

2 Turn on your Macintosh and start Mac OS 9.

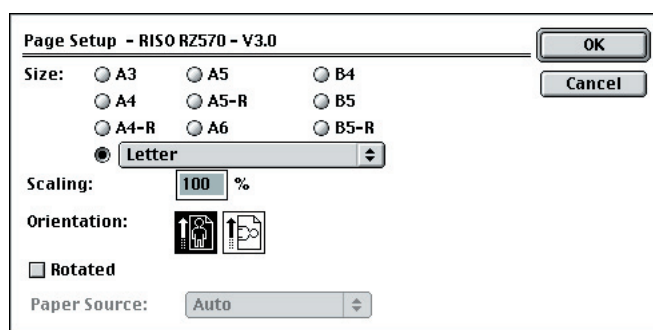
3 Select the current printer to be used.

Select a [RISO...] printer icon in the [Chooser] dialog box, referring to the section “Selecting the Current Printer” on [page 38](#).

4 Open the document file to be printed.

5 Specify the print condition in the [Page Setup] dialog box.

Click on [Page Setup] in the [File] menu to open the [Page Setup] dialog box. (See [page 42](#).)

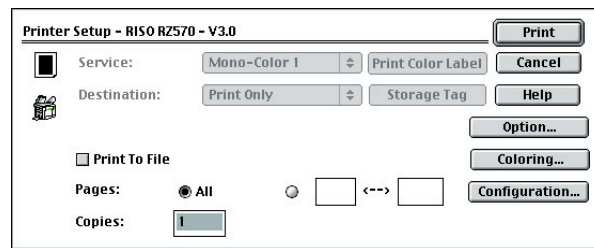


Define the setting and click on the [OK] button.

6

Specify the print job in the [Printer Setup] dialog box.

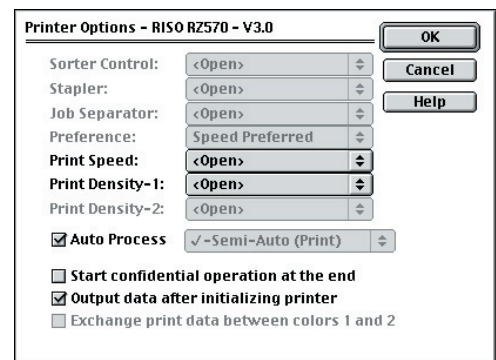
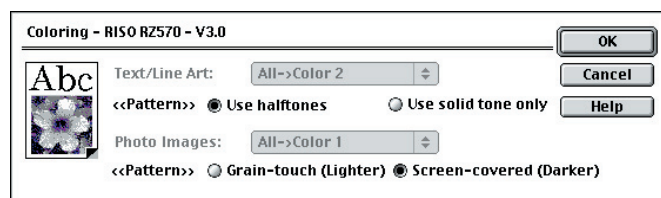
Click on [Print] in the [File] menu to open the [Printer Setup] dialog box. (See [page 44.](#))



If you want to set additional print conditions for the current print job;

Open the following dialog boxes by clicking on the [Coloring (Colouring)] and [Option] buttons in the [Printer Setup] dialog box.

For the detailed descriptions of these dialog boxes, see [page 45](#) and [46](#).



7

Start printing.

Click on the [Print] button in the [Printer Setup] dialog box.

The selected document file data is then transmitted to your RISO printer and printed out there as specified in the previous step.

During the print job, the reduced image of the page to be printed is displayed at the upper left corner on the screen, indicating the data transmission status. As the print data of the displayed page is transmitted to your RISO printer, the reversed area of this reduced page image increases. This image disappears from the screen when data transmission is completed.

NOTE The maximum print area is different depending on the model of RISO printer. If you want to know the maximum print area of your document, consult the user's guide of your RISO printer.

Canceling Print Jobs

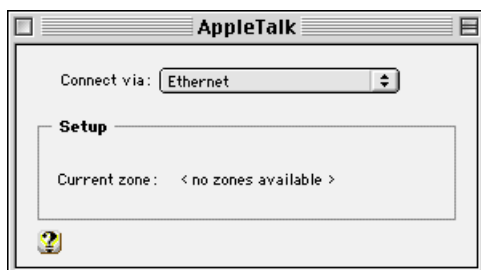
To cancel a print job, press the Command (\mathcal{H}) and period (.) keys simultaneously.

The print job will then be aborted and the reduced page image will disappear from the screen.

Selecting the Current Printer

You must select “RISO...” as the current printer before printing any document on your RISO printer.

NOTE Make sure “Ethernet” is selected in the [AppleTalk] (or [Network]) dialog box, which can be opened from the [Control Panel] window in the [Apple] menu.



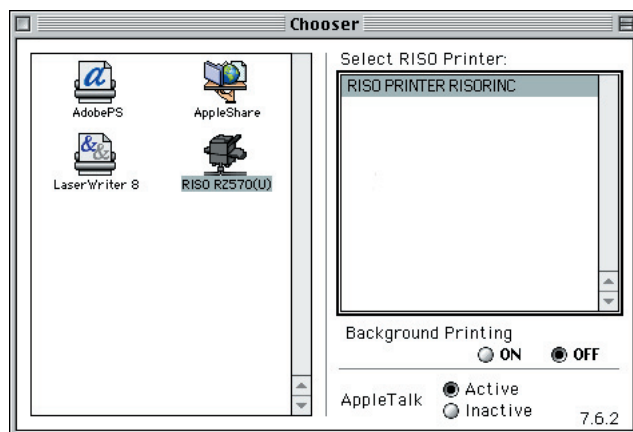
1 Select [Chooser] from the [Apple] menu.

The [Chooser] dialog box appears.

NOTE Make sure your RISO printer is turned ON before selecting the printer driver.

2 Specify the printer driver to be used.

Select the [RISO...] printer icon from the printer list in the dialog box.

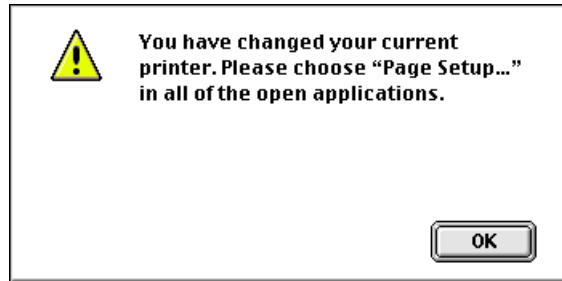


NOTE You can perform other operations while transmitting data to the printer, when you set the [Background Printing] at [ON]. As the data transmission speed becomes slow with this option, however, cancel this option if you want to print fast.

3

Close the [Chooser] dialog box.

Click on the box located at the upper left corner. The confirmation message box as shown below then appears. Click on the [OK] button in this box to confirm your selection.



A printer icon then appears on the desktop of your Macintosh for the selected printer.



NOTE You can check the current printer status if you double-click on the printer icon.

Creating a RISORINC-format file

It is necessary to create a RISORINC-format file before sending data via FTP with RISORINC-NET.

NOTE A RISORINC-format file can only be used with RISO printers.

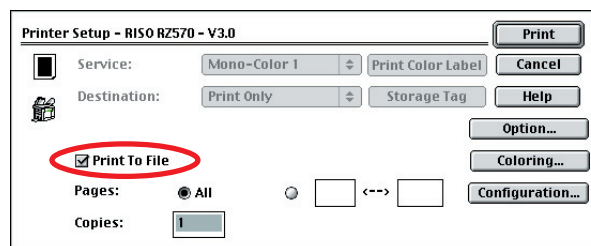
All settings made in the printer driver are saved with the file.

1 Confirm that [RISO...] is selected as the current printer in the [Chooser] dialog box.

The selected [RISO...] should correspond to the RISO printer model to which your document file is to be transmitted. Otherwise, the transmitted document data may not be printed out correctly on the target RISO printer.

2 Open a document file and specify the print job.

Select [Print] in the [File] menu to open the [Printer Setup] dialog box and mark the [Print To File] check box there.



3 Output the document data to a file.

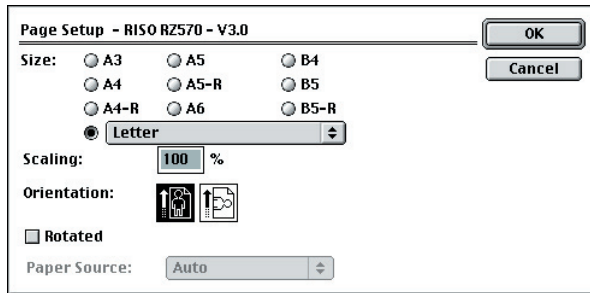
Click on the [Print] button in the [Printer Setup] dialog box. Then specify the name and the destination for the RISORINC-format file to be created in the displayed dialog box and click on the [Save] button.

Setting the Print Conditions

You can set various print conditions in the dialog boxes shown below, which are respectively opened by following the indicated steps.

[Page Setup] Dialog Box

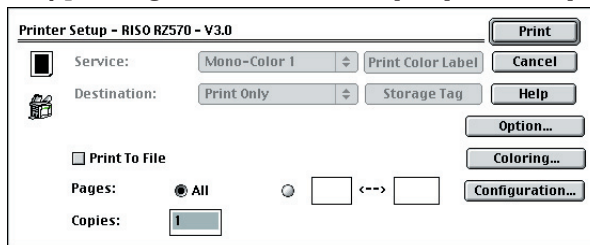
[File] menu -> [Page Setup]



1. Size
2. Scaling
3. Orientation
4. Rotated (Rotate 180°)
5. Paper Source*

[Printer Setup] Dialog Box

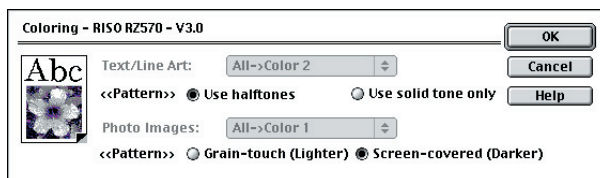
[File] menu -> [Print]



1. Service*
2. [Print Color (Colour) Label] button*
3. Destination*
4. [Storage Tag] button*
5. Print To File
6. Pages / Copies
7. [Option] button
8. [Coloring (Colouring)] button
9. [Configuration] button

[Coloring (Colouring)] Dialog Box

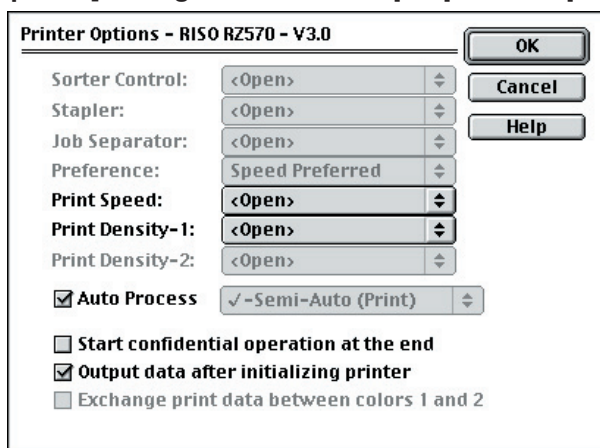
[File] menu -> [Print] -> [Coloring (Colouring)] button



1. Text / Line Art*
2. <Pattern> Use halftones / solid tone only
3. Photo Images*
4. <Pattern> Grain-touch / Screen-covered

[Printer Options] Dialog Box

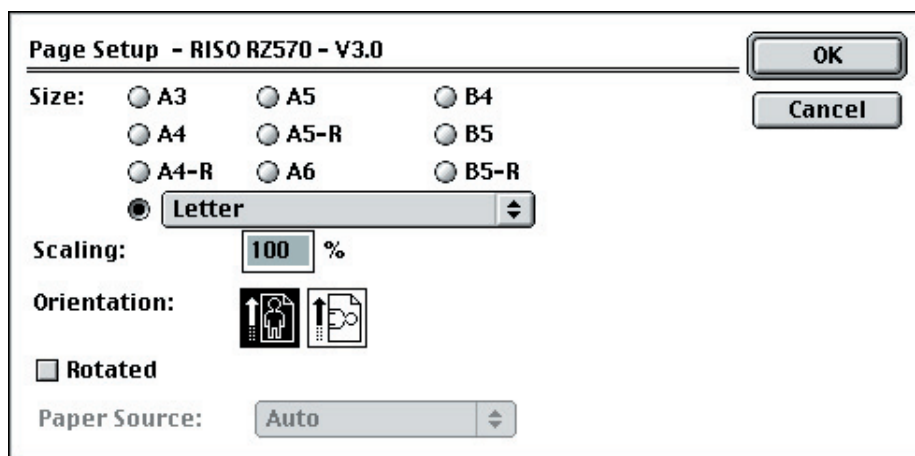
[File] menu -> [Print] -> [Option] button



1. Sorter Control*
2. Stapler*
3. Job Separator
4. Preference
5. Print Speed
6. Print Density
7. Auto Process
8. Start confidential operation at the end
9. Output data after initializing printer
10. Exchange print data between colors (colours) 1 and 2*

*: These options are not available on the printer which you are using.

[Page Setup] Dialog Box



NOTE The items that appear in the [Page Setup] dialog box may differ in certain application softwares.

Size

You can change the paper size specified when creating a document by selecting another size from the given list. The factory-set paper size is “Letter” (8.5 × 11.0 in. /216 × 280 mm) or “A4”(8.3 × 11.7 in. /210 × 297 mm). The table below shows the available paper sizes and their corresponding physical dimensions.

Paper Size	Dimension: Width × Length	Paper Size	Dimension: Width × Length
A3	11.7 × 16.5 in. (297 × 420 mm)	Legal	8.5 × 14.0 in. (216 × 356 mm)
A4	8.3 × 11.7 in. (210 × 297 mm)	Tabloid	11.0 × 17.0 in. (280 × 432 mm)
A5	5.8 × 8.3 in. (148 × 210 mm)	Foolscap	8.5 × 13.4 in. (216 × 340 mm)
A6	4.1 × 5.8 in. (105 × 148 mm)	A4-R	11.7 × 8.3 in. (297 × 210 mm)
B4	10.1 × 14.3 in. (257 × 364 mm)	A5-R	8.3 × 5.8 in. (210 × 148 mm)
B5	7.2 × 10.1 in. (182 × 257 mm)	B5-R	10.1 × 7.2 in. (257 × 182 mm)
B6	5.0 × 7.2 in. (128 × 182 mm)	B6-R	7.2 × 5.0 in. (182 × 128 mm)
Statement	5.5 × 8.5 in. (140 × 216 mm)	Statement-R	8.5 × 5.5 in. (216 × 140 mm)
Letter	8.5 × 11.0 in. (216 × 280 mm)	Letter-R	11.0 × 8.5 in. (280 × 216 mm)

- NOTE**
- The additional paper sizes registered in the [Paper Editor] dialog box (see [page 52](#)) also appear in the pop-up list.
 - Select a paper size that reads “XX-R” when feeding paper, with the wide edge first, on your RISO printer.

Scaling

You can reduce or enlarge the page image in printing according to your needs. The available scale range is 20% to 400%. The factory-set value is 100%.

Orientation

You can change the print orientation when printing a document. When you feed paper in the standard way, narrow edge first, the page image is printed as shown in the selected “print orientation” icon. When paper is fed, wide edge first, i.e. when “XX-R” is selected as paper size, the page image is printed on the sheet in the same direction as shown in the selected icon.

Rotated (Rotate 180°)

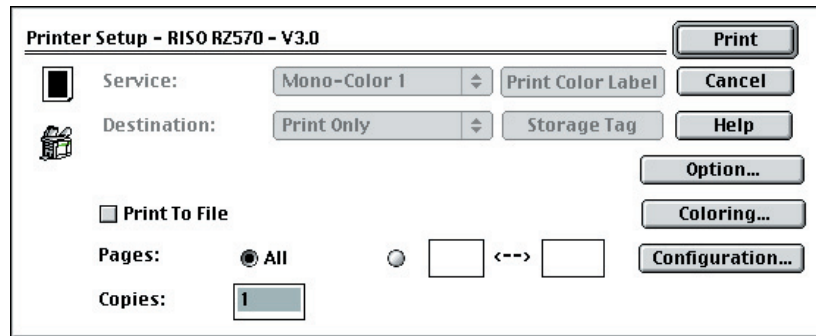
You can rotate print images by 180 degrees by activating this option. Select the check box to activate it. This option is useful when the page direction is required to be changed for stapling printed copies or printing on the media whose feeding direction is limited to one way, such as envelopes.

Important!

This option is also available on the control panel of your RISO printer. Make sure it is not activated on both sides at the same time. If it is, this option will be canceled.

Paper Source <This option is not available on the printer which you are using.>

[Printer Setup] Dialog Box



Service <This option is not available on the printer which you are using.>

[Print Color (Colour) Label] button <This option is not available on the printer which you are using.>

Destination <This option is not available on the printer which you are using.>

[Storage Tag] button <This option is not available on the printer which you are using.>

Print To File

You can specify whether the print data is to be directed to your RISO printer or to a RISORINC-format file. (See [page 40](#).)

Select this check box to redirect the print data to a file, named "Print Data", instead of your RISO printer. The [Print Data] file is stored in the [Extensions] folder in the [System Folder].

Pages / Copies

You can specify the range of pages and number of copies to be printed.

[Option] button

Opens the [Printer Options] dialog box, in which you can specify other print conditions if desired.

[Coloring (Colouring)] button

Opens the [Coloring (Colouring)] dialog box, in which you can specify the image processing patterns.

[Configuration] button

Opens the [Configuration] dialog box, in which you can change the current printer driver configuration.

[Coloring (Colouring)] Dialog Box



Text/Line Art <This option is not available on the printer which you are using.>

<<Pattern>>

You can select either of the following two styles in printing out colored or gray texts/line-art images in your document data.

Use Halftones:

The color difference of texts and line-art images can be reproduced as tone difference on prints.

Use Solid tone only:

The color difference of texts and line-art images is not reflected on prints and all images are to be reproduced as solid ones there.

Photo Images <This option is not available on the printer which you are using.>

<<Pattern>>

You can select either of the following two styles in printing out photo images in your document data. The print result of the selected style of photo images is previewed on the screen.

Grain-touch (Lighter):

Various tones of photo images are reproduced by changing the number of dots in an area according to original density. The printed-out photo images will have grain-touch appearance.

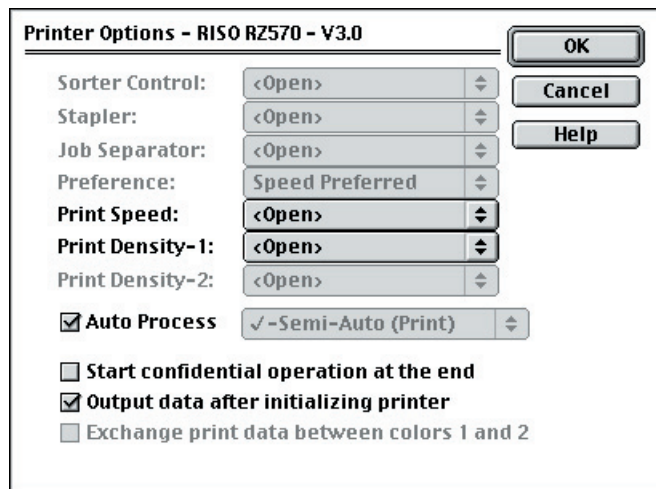
Though the fineness of original photo images can be maintained in this style, the range of tone levels to be realized will be narrower.

Screen-covered (Darker):

Various tones of photo images are reproduced by changing the size of dots according to original density. The printed-out photo images will be covered with a dot screen.

Though the wide range of tone levels in original photo images can be kept in this style, their fineness will be lowered.

[Printer Options] Dialog Box



Sorter Control <This option is not available on the printer which you are using.>

Stapler <This option is not available on the printer which you are using.>

Job Separator

You can activate the Job separator on your RISO printer and select the timing of separation tape insertion. Click on the [◆] bar and select a desired option from the displayed list. The separation tapes can be inserted “between documents” or “between pages”. The factory-set option is “<Open>”, which lets the Job separator operate as specified on the control panel of your RISO printer. If you do not want to use the Job separator, select “OFF”.

NOTE This option is available only when the installation of the Job separator is confirmed in the [Configuration] dialog box → See [page 53](#).

Preference

This setting has no effect on your RISO printer operation. Leave it as it is.

Print Speed

You can select the print speed of your RISO printer. Click on the [◆] bar and select a desired speed level from the displayed list. 5 levels of print speed are available. The factory-set speed level is “<Open>”, which lets your RISO printer operate at the speed level as specified on its own control panel.

Print Density-1

You can select the print density on your RISO printer. Click on the [◆] bar and select a desired density level from the displayed list. 5 levels of print density are available. The factory-set density level is “<Open>”, which lets your RISO printer print at the density level as specified on its own control panel.

NOTE The Print Density cannot be changed on the RZ2 Series.

Auto Process

You can complete your print jobs without further operator involvement by activating this option. Select the check box to activate it. The factory-set status is "Selected".

If any operator involvement is required during a print job, however, cancel this option and select a desired process flow from the given list. The given process flows are as follows :

Semi-Auto (Print):

To interrupt print jobs before each master-making process, thus allowing you to handle a stack of printed copies, especially for duplex printing.

Semi-Auto (Master):

To interrupt print jobs before each printing process, thus allowing you to check a sample print for print position and quality.

Manual:

To interrupt print jobs before each process step, i.e. both master-making and printing processes.

NOTE This option is not available when you select "Storage Only" as data destination in the field above.

Start confidential operation at the end

You can prevent your confidential documents from being duplicated without your knowledge by selecting this check box. When this check box is selected, the remaining master is automatically replaced with a blank one after all specified print jobs are finished.

[Print Data] file is stored in the [Extensions] folder in the [System Folder].

Output data after initializing printer

You RISO printer is initialized before receiving print data when this check box is selected. It is recommended to select this check box in most cases.

Exchanging print data between colors (colours) 1 and 2

<This option is not available on the printer which you are using.>

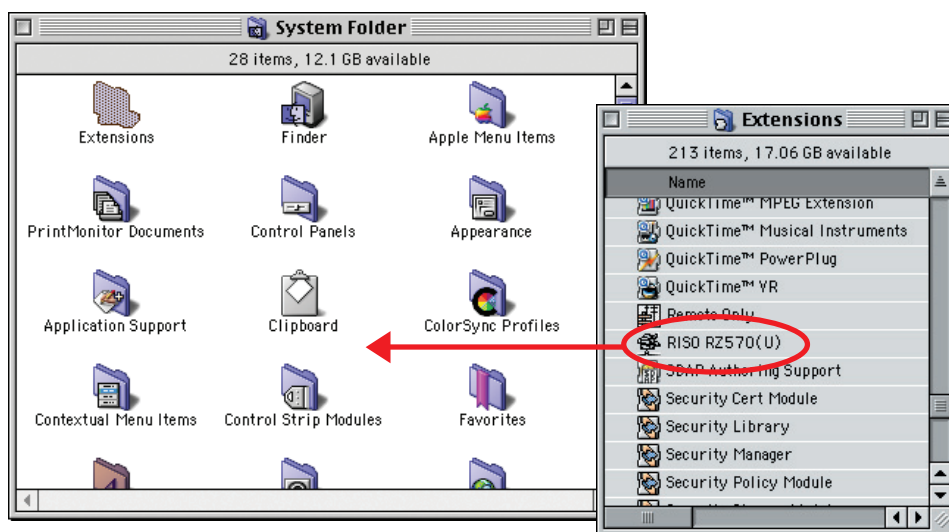
Registering Custom Paper Sizes as Standard

You can register desired custom paper sizes as standard using the [Paper Editor] you installed on the hard disk along with the printer driver. The custom paper size can be named and entered in the pop-up standard paper size list in the [Page Setup] dialog box.

1

Move the RISO printer driver out of the [Extensions] folder.

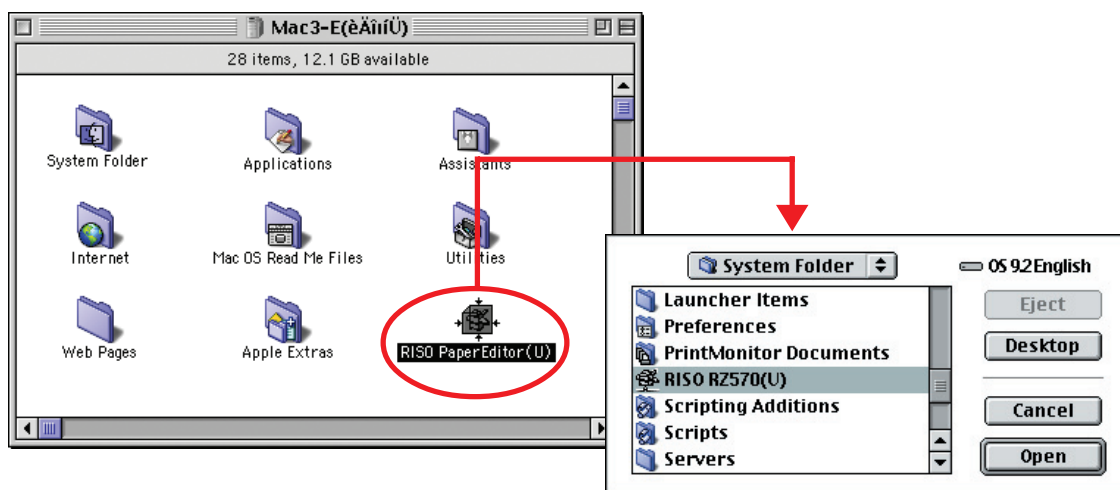
Double-click on the [Extensions] folder in the [System Folder] to open it and drag and drop the [RISO...] file outside the [Extensions] folder.



2

Open the [Paper Editor] dialog box.

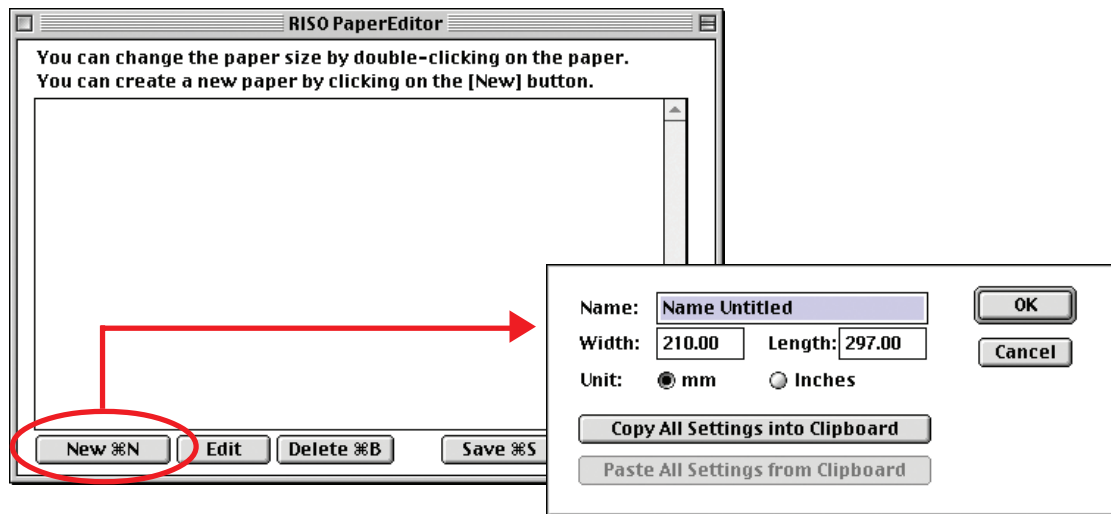
Open the hard disk in which the [RISO Paper Editor] file is stored and double-click on the [RISO Paper Editor] file. You are then prompted to open the relevant file. Select the corresponding RISO printer icon and click on the [Open] button. The [Paper Editor] dialog box then appears as shown in the next page.



3

Click on the [New] button.

The [Paper Editor - Add/Edit] dialog box then appears.

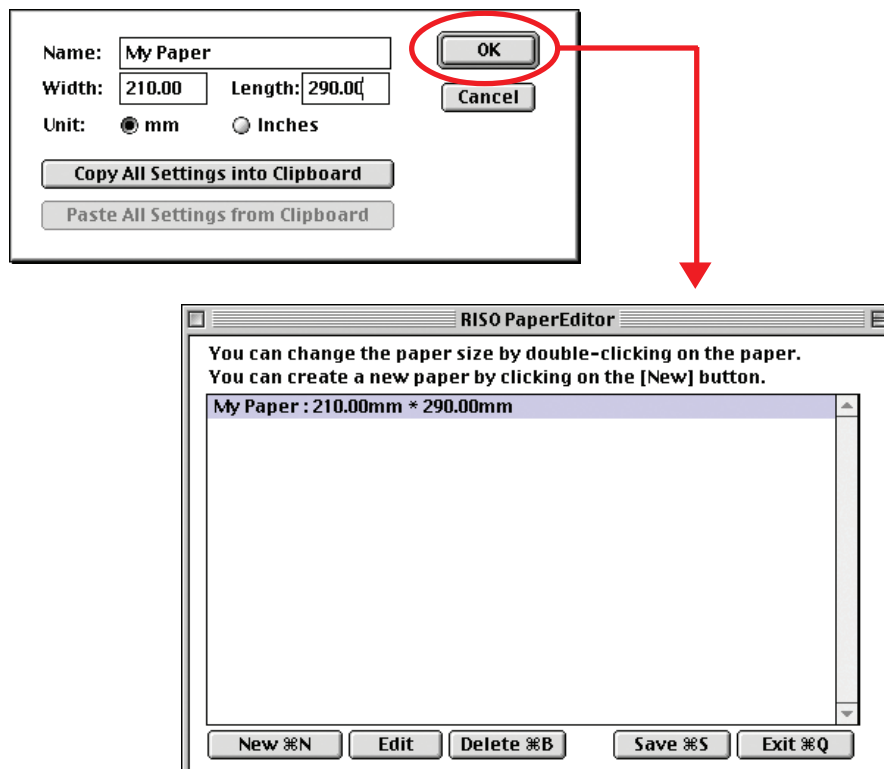


4

Enter a custom paper size and name it.

Enter the name and size of the paper to be registered and click on the [OK] button. The [Paper Editor - Add/Edit] dialog box is then closed and the paper size name which has just been registered is added to the custom paper size register list in the [Paper Editor] dialog box. If you need to change from "inch" to "mm", click the appropriate radio button [☐].

NOTE When registering the custom paper which you intend to feed with its wide edge first, enter the longer value in the "Width" field and the shorter one in the "Length" field.
The available minimum paper size is 0.394 inch x 0.394 inch (10.0 mm x 10.0 mm). The maximum paper size varies with the printer you use. For details, see the instruction manual for your printer.



5**Quits the Paper Editor.**

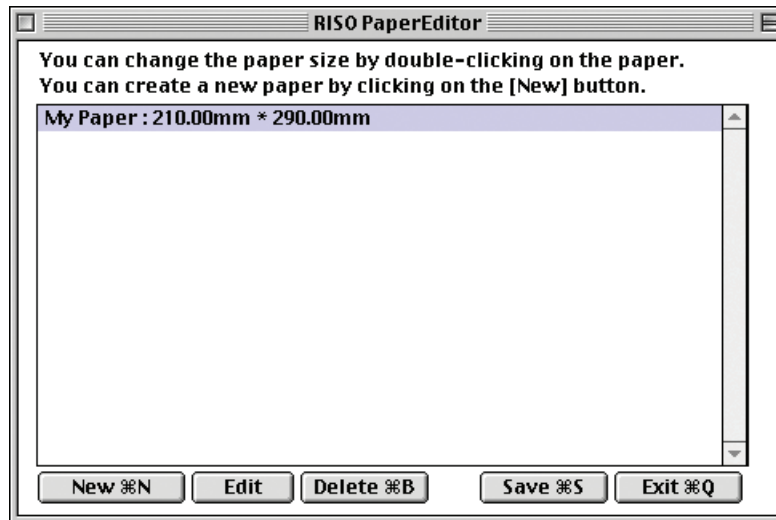
Click on the [Save] button to keep the renewed custom paper size register list in memory and then on the [Exit] button. The [Paper Editor] dialog box is then closed.

6**Move the printer driver back into the [Extensions] folder.**

Drag and drop the [RISO...] file into the [Extensions] folder to return it to its original location.

NOTE ▶ Do not forget to return the printer driver to its original location.

Button Functions in [Paper Editor] Dialog Box



[New] _____

Allows you to name a desired custom paper size and register it as one of the standard ones.

[Edit] _____

Allows you to change the name and/or dimensions of any custom paper size displayed in the register list. When changing the name and/or dimensions of a custom paper size, select the corresponding name from the register list and click on the [Edit] button or double-click on the paper size name itself to open the [Paper Editor - Add/Edit] dialog box, in which you can change the name and dimensions as you wish. Click on the [OK] button to confirm the new name and/or dimensions. The [Paper Editor - Add/Edit] dialog box is then closed and the new name is displayed in the register list in place of the previous one.

[Delete] _____

Allows you to delete a selected custom paper size from the register list. When deleting a custom paper size, select the corresponding name from the register list and click on the [Delete] button.

NOTE Take extra care not to delete another custom paper size in error because a confirmation message doesn't appear when clicking on the [Delete] button.

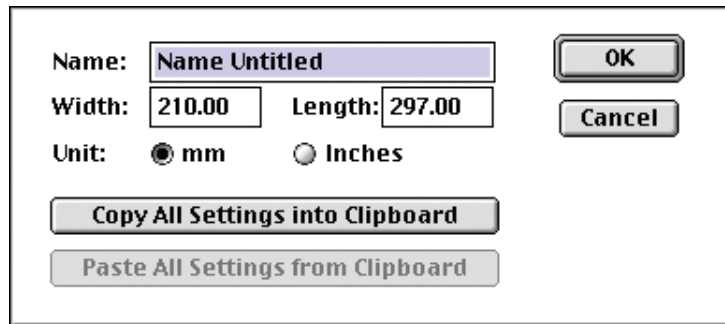
[Save] _____

Keeps the current custom paper size register list in memory.

[Exit] _____

Closes this dialog box.

Button Functions in [Paper Editor - Add/Edit] Dialog Box



The dialog box is titled "[Paper Editor - Add/Edit]". It contains the following elements:

- Name:** A text field containing "Name Untitled".
- Width:** A text field containing "210.00".
- Length:** A text field containing "297.00".
- Unit:** Two radio buttons. The first is labeled "mm" and is selected. The second is labeled "Inches" and is unselected.
- Buttons:** Four buttons are located on the right side: "OK", "Cancel", "Copy All Settings into Clipboard", and "Paste All Settings from Clipboard".

[OK] _____

Confirms the current setting and closes this dialog box.

[Cancel] _____

Ignores any changes, resumes the previous settings and closes this dialog box.

[Copy All Settings into Clipboard] _____

Copies the name and dimensions of the displayed custom paper size into the "Clipboard" file.

[Paste All Settings from Clipboard] _____

Pastes the name and dimensions of the custom paper size saved in the "Clipboard" file on the corresponding fields in this dialog box.

When you add a custom paper size to the register list which is similar to an existing one, follow the procedure below.

- 1) Double-click on the existing custom paper size in the register list.
- 2) Click on the [Copy All Settings into Clipboard] button and click on the [OK] button.
- 3) Click on the [New] button.
- 4) Click on the [Paste All Settings from Clipboard] button.
- 5) Change the name and dimensions of the pasted custom paper size as you wish.

Changing the Printer Driver Configuration

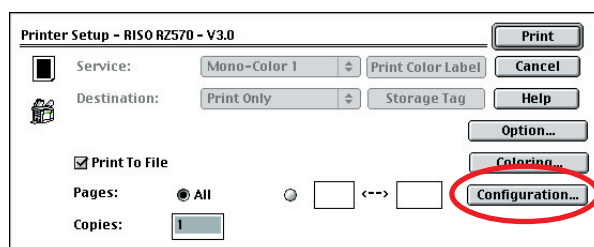
You are required to change the configuration of the installed printer driver program if your RISO printer is equipped with optional devices, such as sorter and multi-tray paper feeder. If you do not change the printer driver configuration, you will not be able to select the corresponding option when specifying the print conditions of your print job.

1

Open the [Configuration] dialog box.

Click on the [Configuration] button in the [Printer Setup] dialog box.

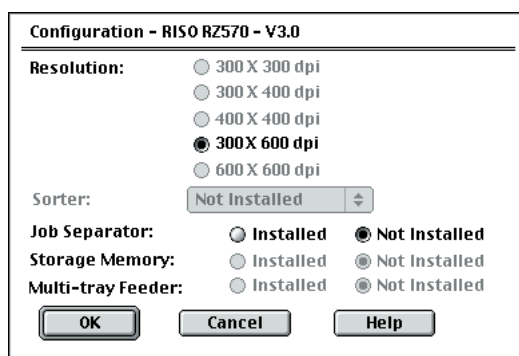
NOTE To open the [Printer Setup] dialog box, click on [Print] in the [File] menu.



2

Select the optional devices with which your RISO printer is equipped.

Click on the [Installed] circles of the optional device concerned.



3

Click on the [OK] button.

The new printer driver configuration is confirmed and the [Configuration] dialog box is closed.

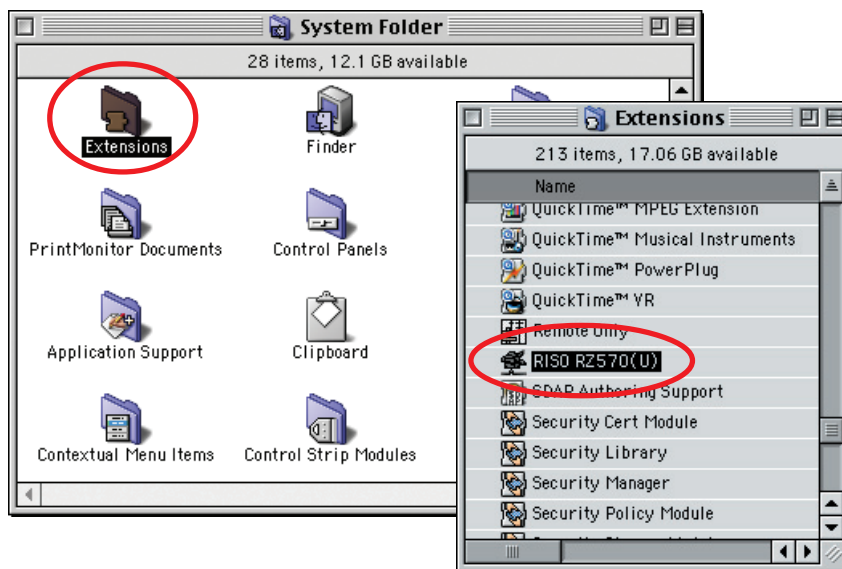
Finding Information about the Printer Driver

The information about the RISO printer driver may sometimes be requested by your service representative when you contact him or her due to function errors. In that case, get it as instructed below.

1

Select the [RISO...] file.

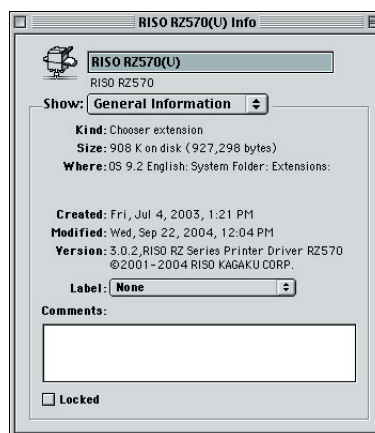
Double-click on the [Extensions] folder in the [System Folder].
Then, click on the [RISO...] file and highlight it.



2

Open the [Information] window.

Choose [Get Info] from the [File] menu. The following printer driver information window then appears.



You can check the version number of the printer driver in this window and write down comments in the [Comments] box if desired. Mark the [Locked] check box to inhibit any custom paper sizes from being registered or changed. To close this window, click on the box located at its upper left corner.

Installing the Printer Driver

You are required to install, in your Macintosh, the corresponding RISO printer driver that enables the printout of data on your RISO printer, and the dedicated Paper Editor.

IMPORTANT!

This printer driver functions only under the following Macintosh system configuration:

Mac OS 8.6 - 9.2.2 with PowerPC and 192MB or more RAM. Check your Macintosh environment.

1

Turn on your Macintosh and start Mac OS.

IMPORTANT!

If an old version of RISO printer driver is already installed in your computer, uninstall it before installing this version.

To uninstall the old version,

1. Move the corresponding RISO printer icon into the [Trash] icon.
2. Move the printer driver file concerned in the [Extensions] folder in the [System Folder] into the [Trash] icon.

2

Insert the dedicated software CD-ROM in the CD-ROM drive.

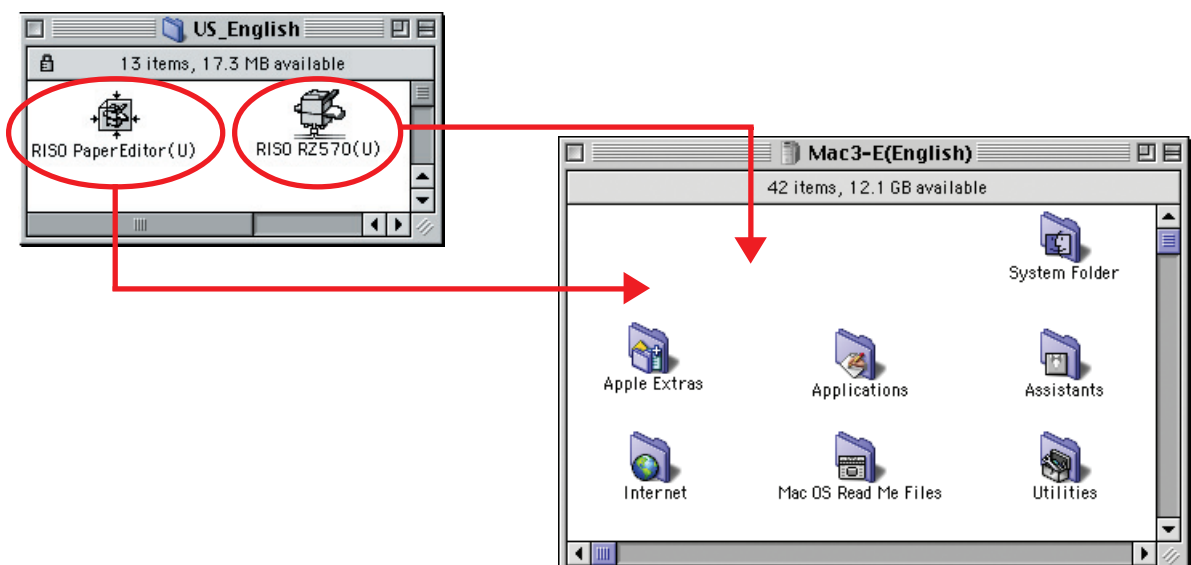
The CD-ROM icon named "RISO Printer Driver" appears on the screen.



3

Copy the required files into the hard disk.

Double-click on the CD-ROM icon. Then the folders containing different language's printer drivers appear. Double-click on one of them to open it and copy the [RISO...] file corresponding to your RISO printer and [RISO Paper Editor] file into the hard disk.

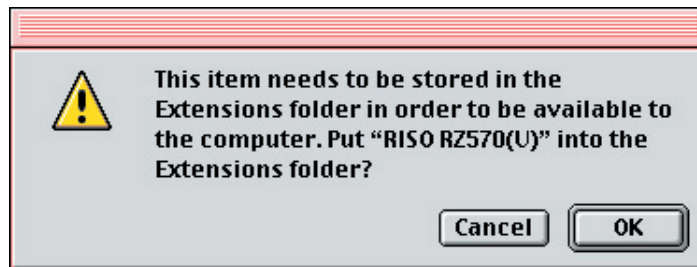


4**Move the RISO printer icon into the [System Folder] icon.**

Drag and drop the printer icon corresponding to your RISO printer into the [System Folder] icon.



The following confirmation message appears. Click on the [OK] button in the message box, to copy the printer driver into the [Extensions] folder in the [System Folder].

**5****End the printer driver's installation.**

Drag and drop the CD-ROM icon onto the [Trash] icon and remove the CD-ROM.

NOTE ➤ Keep the CD-ROM in a safe location.

Printer Driver for Mac OS X

Sending and Printing Data

Follow the procedures given below to print out document data directly on your RISO printer.

If the corresponding RISO printer driver has not been installed in your Macintosh yet, install it first, referring to the section “Installing the Printer Driver” on [page 78](#).

IMPORTANT!

- The maximum print area is different depending on the model of RISO printer. If you want to know the maximum print area of your document, consult the user's guide of your RISO printer.
- For other limitations, also read the user's guide of your printer.

1

Turn on your RISO printer and load paper.

Be sure to turn your RISO printer on, and feed the paper in same size as the document printed.
Adjust the feeder and output tray prior to printing.
Refer to the user's guide of your RISO printer for details.

2

Turn on your Macintosh and start Mac OS X.

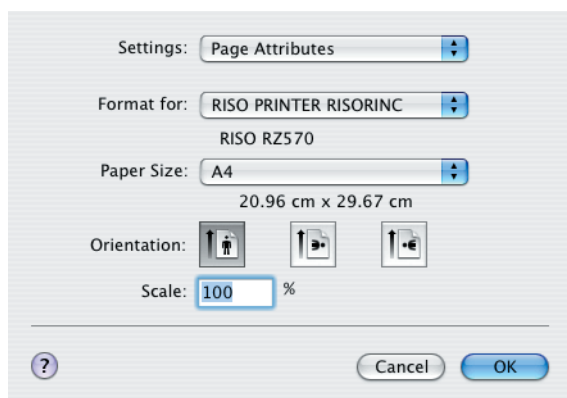
3

Open the [Page Setup] dialog box.

Open the document to be printed, and select [Page Setup] from the [File] menu. (Menu names may vary depending on the software application.)

IMPORTANT!

If you have two or more printers connected, select the current printer from the [Format for].
After settings are confirmed, click on the [OK] button to close the dialog box.

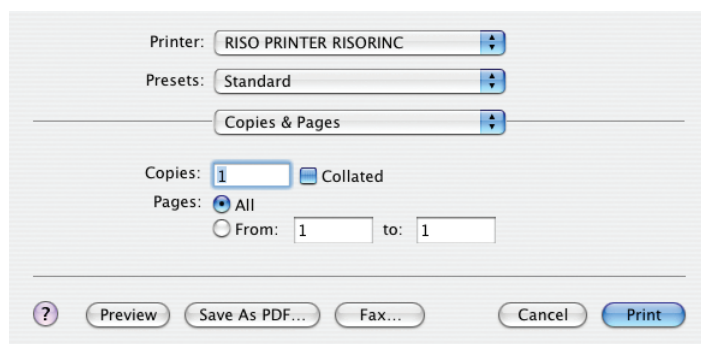


Define the setting and click on the [OK] button.

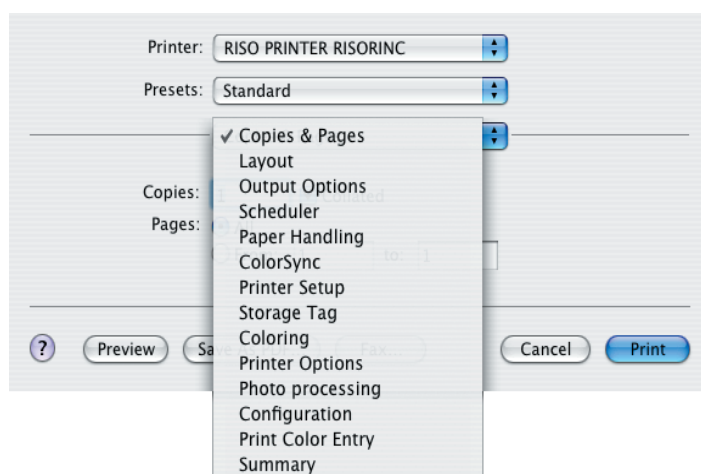
4

Specify the print job in the [Printer Setup] dialog box.

Click on [Print] in the [File] menu to open the [Printer Setup] dialog box.



Specify the number of copies and range of pages to be printed. Deselect the [Collated] check box. For detailed settings, select relevant items from the list box for settings. (See [page 60](#))



5

Start printing.

Click on the [Print] button.

The selected document file data is then transmitted to your RISO printer and printed out there as specified in the previous step.

Add the printer to the printer list -Mac OS X 10.3-

- 1** Turn on your RISO printer.
- 2** On the Mac OS X startup disk, activate the [Printer Setup Utility] from the [Utilities] folder in [Applications] folder.
- 3** Click on the [Add] icon.
- 4** Select [AppleTalk].
- 5** Click on the printer icon you want to add
- 6** Click on the [Add] button.
- 7** Confirm that your RISO printer is added to the printer list.

Add the printer to the printer list -Mac OS X 10.4-

- 1** Turn on your RISO printer.
- 2** On the Mac OS X startup disk, activate the [Printer Setup Utility] from the [Utilities] folder in [Applications] folder.
- 3** Click on the [Add] icon.
- 4** Select the RISO printer you want to add ([AppleTalk] connection).
- 5** Select the RISO printer driver you want to add.
- 6** Click on the [Add] button.
- 7** Confirm that your RISO printer is added to the printer list.

Dialog Box Settings

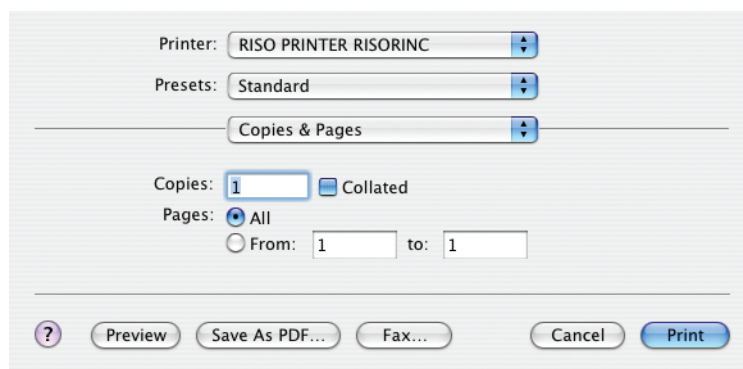
Mac OS settings

Some operation may differ depending on the version of Mac OS X.

For details, refer to Mac OS X Help.

This manual explains on Mac OS X 10.3.

Copies & Pages



You can set the number of copies and range of pages to be printed.

Copies

Enter the value for the number of copies to be printed.

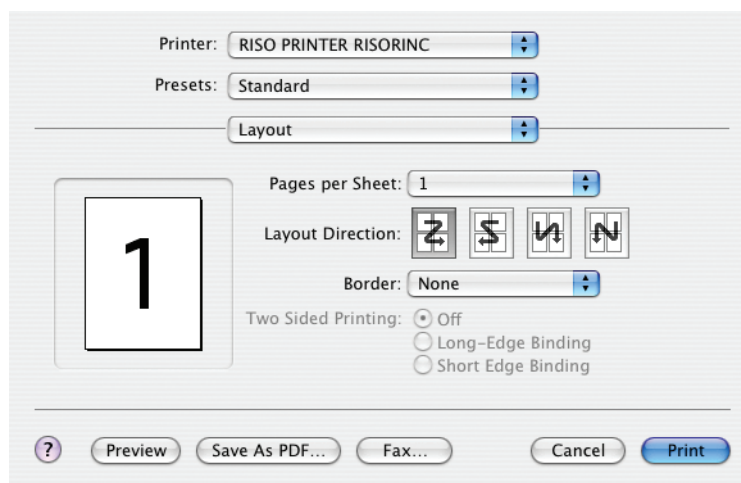
Collated

Never fail to deselect the [Collated] box when you use the RISO Printer Driver for printing.

Pages

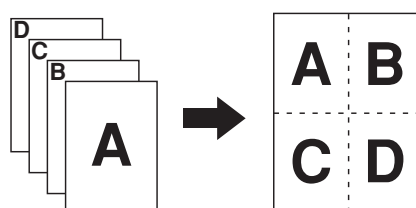
You can specify the range of pages to be printed.

Layout



This option allows you layout processing.

You can print the data of two or more pages on one sheet of paper.



Pages per Sheet

You can select the number of pages to be printed on one sheet of paper, from 1, 2, 4, 6, 9, or 16.

Layout Direction

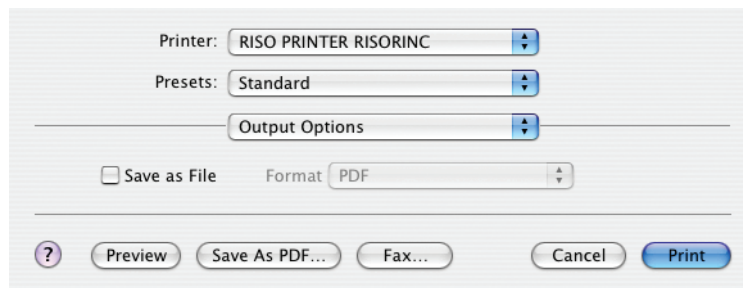
You can select page direction to be printed.

Border

This option allows you to draw the outline on the paper.

If you do not print the outline, select [None].

Output Options



You can specify whether the print data is to be directed to your RISO printer or to a file.

Save as File

Select this check box to redirect the print data to a file.

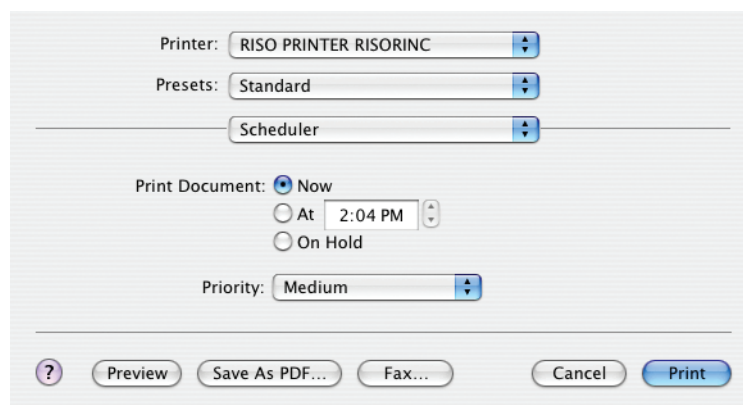
Format

Select the [Format] for choice between PDF and PostScript file.

IMPORTANT!

You cannot create the RISORINC-format file.

Scheduler



You can specify the printing schedule.

Print Document

Now : The print command is sent immediately.

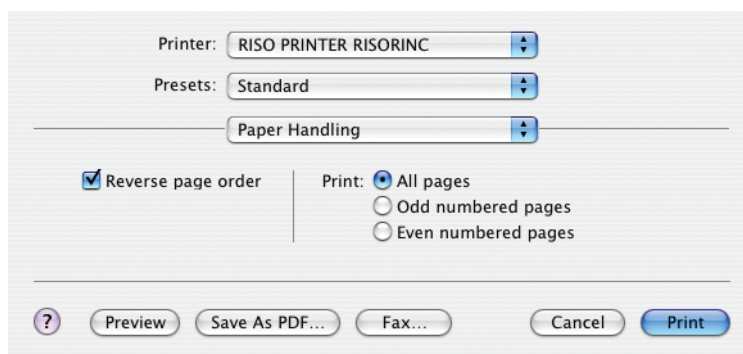
At : The data is to be printed at a specified time.

On Hold : Printing is reserved.

Priority

You can select priority of documents to be printed.

Paper Handling



You can select the printing order of pages and range of pages.

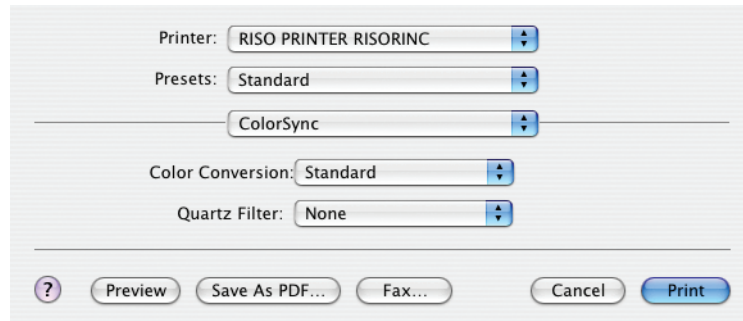
Reverse page order

If you select this check box, the document will be printed in inverse order.

Print

You can specify the range of pages to be printed.

Color Sync



You can determine the ColorSync settings.

Color Conversion

[Standard] is only available on the RISO Printer Driver.

Quartz Filter

Select [None] on the RISO Printer Driver.

Settings for photo image processing should be made on [Coloring] (See [page 67](#)) and [Photo processing] (See [page 71](#)) options.

RISO Printer Driver Settings

Printer Setup



Process

You can specify how to process your print jobs on your RISO printer, i.e. to complete them without interruption or to interrupt them after a specified process step. By interrupting your print jobs, you can check print position and quality with test prints before printing process or change the print job flow according to your print requirements. Click on the [▼] bar and select a desired process flow from the displayed list. The available process flows are as follows :

Full Auto:

To complete print jobs without operator involvement on your RISO printer. No pause is made between master-making and printing processes until the end of print jobs.

Semi-Auto (Print):

To interrupt print jobs before each master-making process, thus allowing you to handle a stack of printed copies, especially for duplex printing.

Semi-Auto (Master):

To interrupt print jobs before each printing process, thus allowing you to check a sample print.

Manual:

To interrupt print jobs before each process step, i.e. both master-making and printing processes.

Destination

■ This option is not available on the printer which you are using.

Paper Source

■ This option is not available on the printer which you are using.

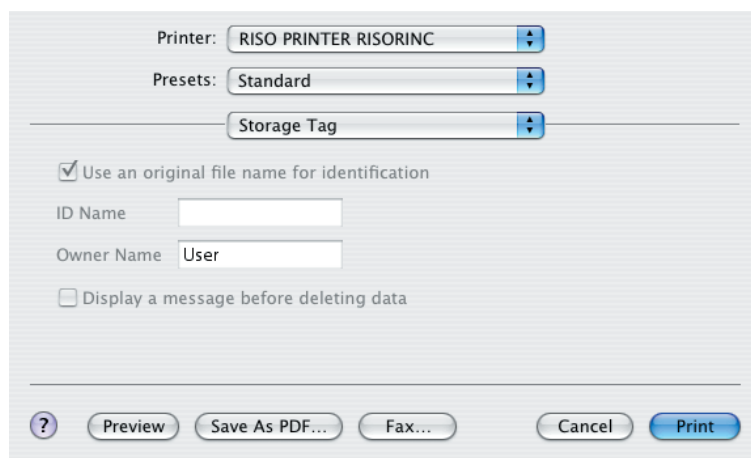
Rotated

You can rotate print images by 180 degrees by activating this option.

IMPORTANT!

This option is also available on the control panel of your RISO printer. Make sure it is not activated on both sides at the same time. If it is, this option will be canceled.

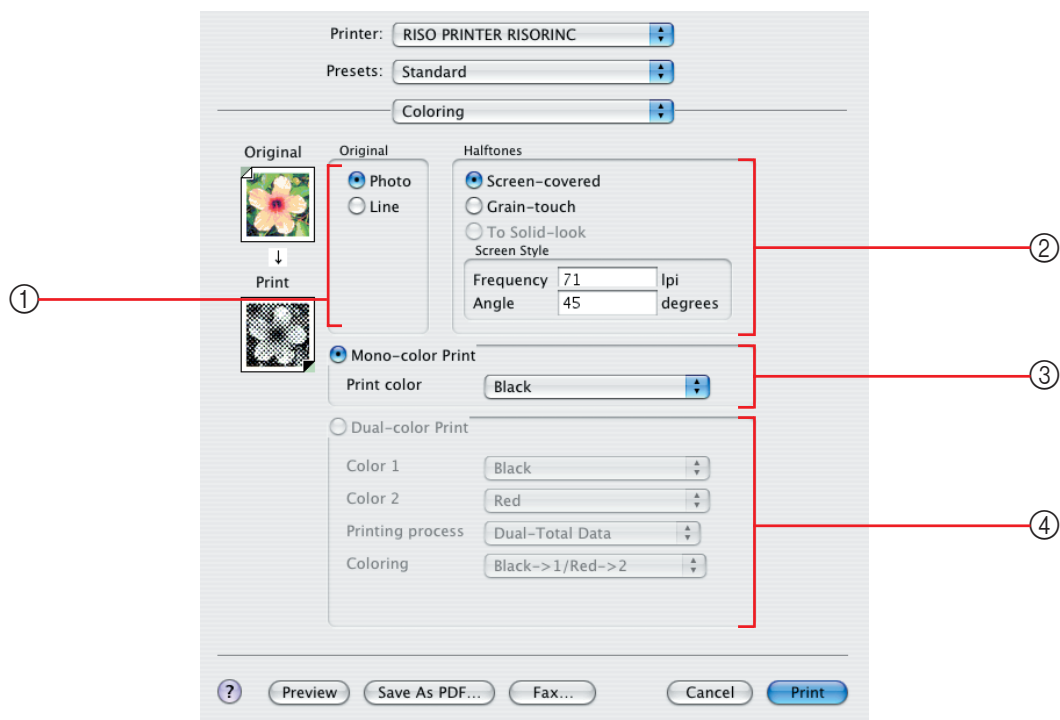
Storage Tag



The dialog box is titled "Storage Tag". It features a "Printer:" dropdown menu with "RISO PRINTER RISORINC" selected, and a "Presets:" dropdown menu with "Standard" selected. Below these is a "Storage Tag" dropdown menu. A checked checkbox labeled "Use an original file name for identification" is present, followed by an "ID Name" text field. Below that is an "Owner Name" text field containing the text "User". A unchecked checkbox labeled "Display a message before deleting data" is also present. At the bottom, there is a row of buttons: a help button (question mark in a circle), "Preview", "Save As PDF...", "Fax...", "Cancel", and "Print".

- This option is not available on the printer which you are using.

Coloring



① Original

- Photo
- Line

② Halftones

- Screen-covered
- Grain-touch
- To Solid-look
- Screen Style
 - Frequency
 - Angle

③ Mono-color Print

- Print Color

④ Dual-color Print*

* This option is not available on the printer which you are using.

① Original

You can select document types.

Photo

Click on the circle when the manuscript includes photo images.

Line

Click on the circle when the manuscript consists of texts and drawings.

② Halftones

You can select grayscale and halftones for color photos.
You can view your choice on the sample image on the left.

Screen-covered

A halftone processing mode by changing the size of dots depending on the document print density. It is superior in halftone output, but reproduces finer images in inferior quality to [Grain-touch] mode.

Grain-touch

A halftone processing mode by determining printing per dot depending on the document print density. It enables to reproduce finer images, but the halftone quality is inferior to [Screen-covered].

To Solid-look

This mode makes all text solid-look. You can use this mode to express the text clearly. The difference of each text color cannot be expressed.

Screen-covered parameter can be set by selecting [Screen-covered].

Frequency

You can select the frequency of dots per inch (25.4 mm). You can select the value from 38 to 200. The default value is 72.

Angle

You can select the angle of dot direction so as to make adjustments against moire or other problems. You can select the value from 0 to 90. The default value is 45.

③ Mono-color print

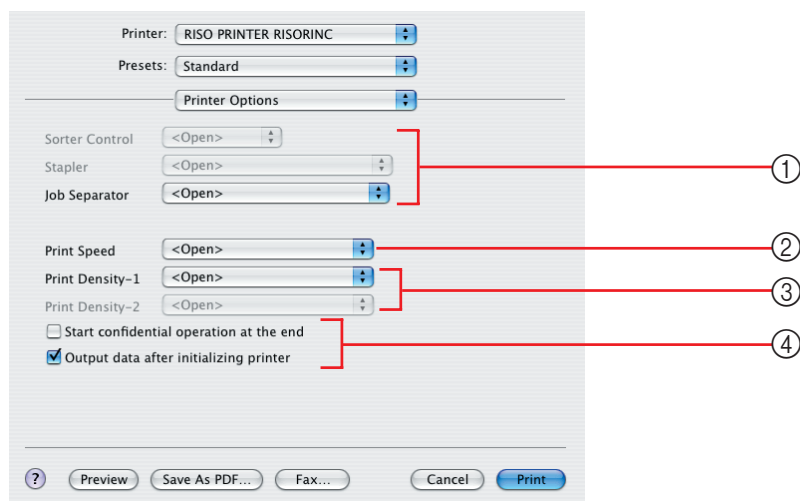
Print Color

Select the print colors mounted on your RISO printer.

④ Dual-color Print

■ This option is not available on the printer which you are using.

Printer Options



Settings

① Configuration

- Sorter Control*
- Stapler*
- Job Separator

② Print Speed

③ Print Density

* This option is not available on the printer which you are using.

④ Other options

- Start confidential operation at the end
- Output data after initializing printer

① Configuration

- The optional settings are displayed if your RISO printer is equipped with optional devices, which are selected in the [Configuration] dialog box. (See [page 73](#))

Sorter Control

- This option is not available on the printer which you are using.

Stapler

- This option is not available on the printer which you are using.

Job Separator

You can activate the job separator on your RISO printer and select the timing of separation tape insertion.

<Open> : Follow the present setting of your RISO printer.

OFF : No separation tape inserted.

ON-Between Documents : Insert separation tapes per job.

ON-Between Pages : Insert separation tapes per page.

NOTE Refer to the user's guide of the job separator for its functions and operations.

② Print Speed

You can select the print speed of your RISO printer. 5 levels of print speed are available. The factory-set speed level is “<Open>”, which lets your RISO printer operate at the speed level as specified on its own control panel.

③ Print Density

You can select the print density on your RISO printer. 5 levels of print density are available. The factory-set density level is “<Open>”, which lets your RISO printer operate at the density level as specified on its own control panel.

NOTE The Print Density cannot be changed on the RZ2 Series.

④ Other options

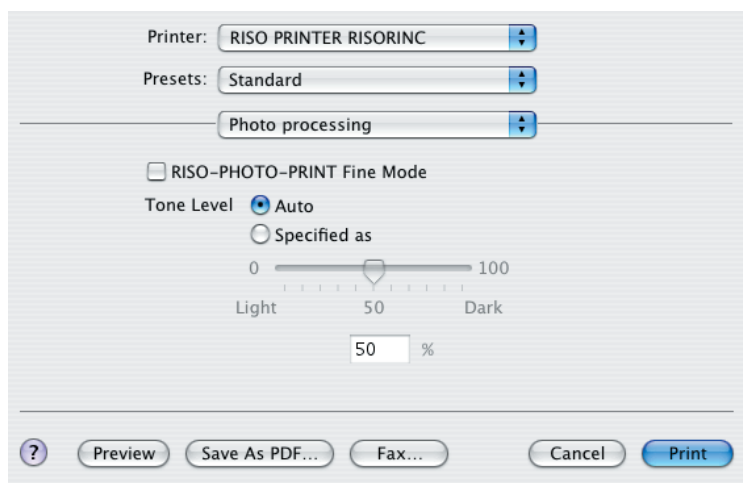
Start confidential operation at the end

You can prevent your confidential documents from being duplicated without your knowledge by selecting this check box. When this check box is selected, the remaining master is automatically replaced with a blank one after all specified print jobs are finished.

Output data after initializing printer

Your RISO printer is initialized before receiving print data when this check box is selected. It is recommended to select this check box in most cases.

Photo processing



You can specify the photo image processing mode.

This option is not displayed if you select [Line] in [Original] for the [Coloring] dialog box (See [page 67](#)).

RISO-PHOTO-PRINT Fine Mode

This image processing mode is originally developed by RISO, in order to reproduce photo images while keeping their original fineness as well as possible.

You can activate this mode by selecting the corresponding check box.

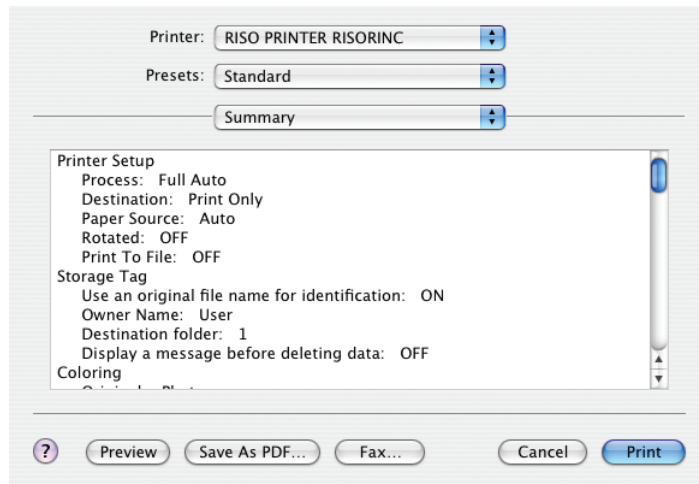
Tone Level

You can adjust the tone level of original photo images to obtain an optimum photo tone in prints.

Auto : The tone level of original photo images is automatically adjusted to compensate for their tone unbalance.

Specified as : The tone of original photo images can be changed according to your needs by shifting the pointer on the sliding bar or directly entering a desired value into the corresponding field. Shift the pointer toward “0%” if you want to make the photo tone lighter and toward “100%” if you want to make it darker. 100 steps of tone level are available. This option covers the whole job, not available in respective images.

Summary



You can view the settings at a glance.

Changing the Printer Driver Configuration

You are required to change the configuration of the installed printer driver program if your RISO printer is equipped with optional devices such as sorter and colors.

Settings for Auto Quick Dual-color and auto detection of color information are also available.

Configuration

Printer: RISO PRINTER RISORINC

Presets: Standard

Configuration

Sorter: Not Installed

Job Separator: ☒ Installed ☐ Not Installed

Storage Memory: ☐ Installed ☒ Not Installed

Multi-tray Feeder: ☐ Installed ☒ Not Installed

? Preview Save As PDF... Fax... Cancel Print

■ You cannot select this option without any optional devices connected.

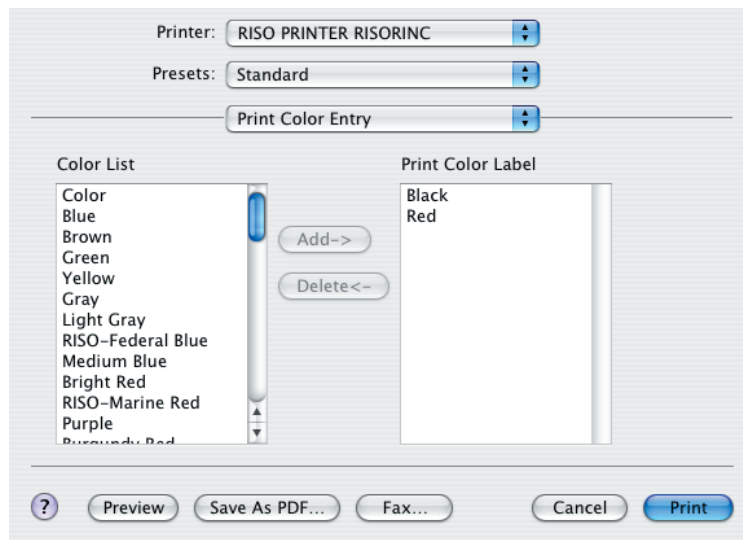
Sorter : This option is not available on the printer which you are using.

Job Separator : Select [Installed] if your RISO printer is equipped with the Job Separator.

Storage Memory : This option is not available on the printer which you are using.

Multi-tray Feeder : This option is not available on the printer which you are using.

Print Color Entry



Register the print colors you have on your RISO printer.

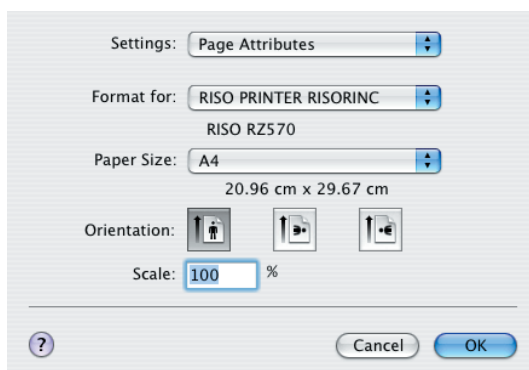
The print colors registered are displayed in the [Print Color] pull-down menu in the [Coloring] dialog box.

Register frequently used custom paper size

[Custom Paper Size] setting allows you to add a custom paper size to the register list. The paper size name, which has just been registered, is added to the custom paper size register list in the pull-down menu of the [Page Setup] dialog box. (See [page 57](#))

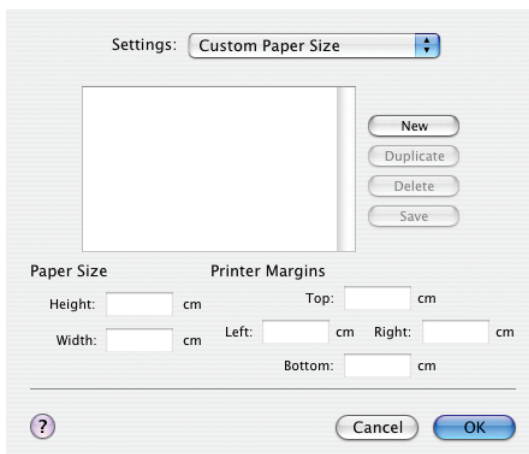
1

Open the [Page Setup] dialog box from the application software you are using.



2

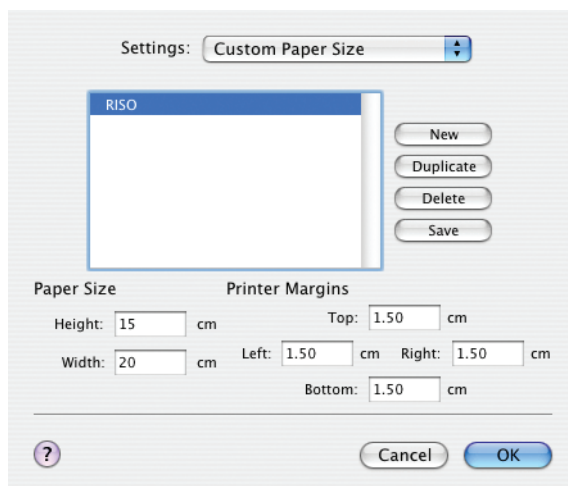
Select [Custom Paper Size] of the [Settings] pull-down menu to open the [Custom Paper Size] dialog box.



3

Click on the [New] button to add a custom paper size to the register list.

Enter the values in the fields [Name], [Paper Size], and [Printer Margins] for an added custom paper size.



- NOTE**
- If you register the paper size in horizontal direction, enter the value of longer side in the [Width] field and that of shorter side in the [Height] field.
 - Entry of the name and dimensions will help you when you select the paper size.
 - Paper size to be registered may vary depending on the printer model you use. Refer to the user's guide of your RISO printer for details.

4

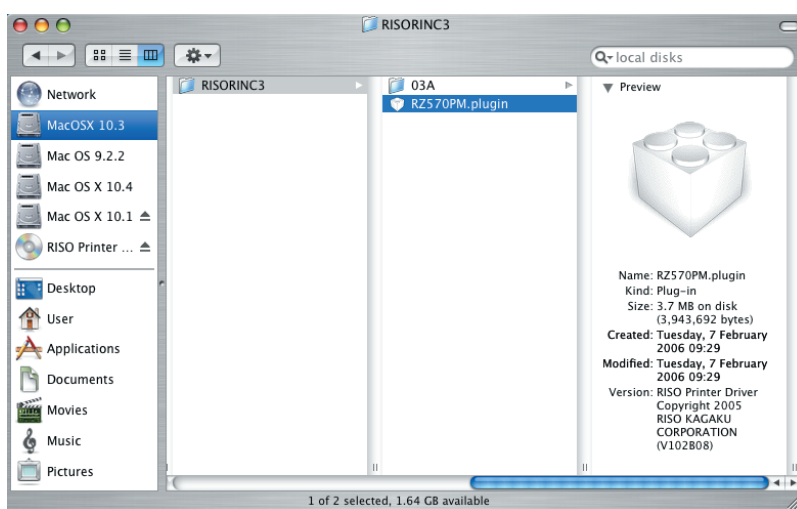
You can save the information of your customer paper size by clicking on the [Save] button.

Click on the [OK] button to close the dialog box.

Finding Version Number of the Printer Driver

In case you contact your service representative due to function errors, check this version number beforehand.

- 1** On the Mac OS X startup disk, open the [RISORINC3] from [Printers]-[RISO] folder in [Library] folder.
- 2** Select the Plug-in file with name of your printer.



You can check the file information of the printer driver in preview window. When preview window is not displayed, select [Get Info] in [File] to display preview window. The bottom column in Version displays driver's version number.

Installing the Printer Driver

You are required to install, in your Macintosh, the corresponding RISO printer driver that enables the printout of data on your RISO printer, and the dedicated Paper Editor.

IMPORTANT!

- This printer driver is exclusively for Mac OS X (10.3 ~ 10.4)
- RISO printer system requirements:
CPU : PowerPC G3 or higher recommended
192MB of RAM or more
- If an old version of RISO Printer Driver is already installed in your computer, delete it from the printer list of [Printer Setup Utility].

- 1** Turn on your Macintosh and start Mac OS X.
- 2** Insert the dedicated software CD-ROM in the CD-ROM drive.
- 3** Double-click on the CD-ROM icon, and open the folder of a desired printer.
- 4** Double-click on the installer package (pkg file) icon for a desired printer.
Install the printer driver following the instructions appearing on the screen.
- 5** End the printer driver's installation.
NOTE ▶ Keep the CD-ROM in a safe location.
- 6** Restart your Macintosh.



Appendix

Troubleshooting Tips	81
Error Message on Windows PC's Display ...	81
Operation Problems	82

Troubleshooting Tips

Error Message on Windows PC's Display

Take actions as given below if the following error messages appear in the PC's display.

Message	Description and Action
The printer is not ready for printing. (The device is not ready.)	<ul style="list-style-type: none"><input type="checkbox"/> This message appears when your RISO printer requires paper or it is not connected to your computer properly. Action Replenish paper or check your RISO printer and the printer cable for poor connection, and then restart printing.<input type="checkbox"/> This message also appears when the memory of your RISO printer becomes full during data transmission because the size of the document data concerned is too large. Action Reduce the file size of the document data concerned or increase the value of the [Timeout] setting in your computer system, and then restart printing.
Cannot print because an error is found in the current printer settings.	<ul style="list-style-type: none"><input type="checkbox"/> This message appears if the printer settings (paper size, print orientation, etc.) in the application software and the printer driver do not match. Action Change the printer settings in the application software to make them identical with those in the printer driver or vice versa.
Eject the master immediately after printing?	<ul style="list-style-type: none"><input type="checkbox"/> This message appears to request your confirmation before sending the first page of data if the [Start confidential operation at the end] option in the [Properties] dialog box of the printer driver is selected. Action Click on the [Yes] button if you want to keep the [Confidential] option and the [No] button if not. Click on the [Cancel] button if you want to cancel the current print order.

Operation Problems

Check your system setup as given below if you encounter the following operation problems. Contact your service representative for help if you cannot solve the problem.

No Printout_____

Problem	Cause / Condition and Action
Your Macintosh does not start a print job after clicking on the [Print] button in the [Printer Setup] dialog box. (Mac OS)	<div><input type="checkbox"/> The memory of your Macintosh is not enough for your print job.</div> <div>Action Increase the memory value by increasing the value of the virtual memory.</div>
Your RISO printer is not receiving data from your computer even after the print job finishes in the application software.	<div><input type="checkbox"/> Your computer is not securely connected to your RISO printer.</div> <div>Action Connect the printer cable (or network cable) to both your computer and your RISO printer securely.</div> <div><input type="checkbox"/> The [RISO...] printer driver is not selected.</div> <div>Action Select it and reprint.</div> <div><input type="checkbox"/> [Printing] is displayed as the printer status when you open the [RISO...] printer monitor window.</div> <div>Action Wait until the printer status display changes in the [RISO...] printer monitor window.</div>

Problem

Your RISO printer cannot finish processing the current document data.

Cause / Condition and Action

- ☐ The printer cable (or network cable) was removed just after a print job started in the application software. ([Printing] is displayed when you open the [RISO...] printer monitor window in this case.)

Action > Reconnect the cable and cancel the current job in the [RISO...] printer monitor window. Then turn off the main power switch of your RISO printer. After approximately 10 seconds, turn it on again.

- ☐ [Pause] is displayed as the printer status when you open the [RISO...] printer monitor window.

Action > Click on the [Restart] in the [Document] menu in the [RISO...] printer monitor window.

- ☐ The printer settings (paper size, print orientation, etc.) in the application software and in the printer driver do not match.

Action > Change the printer settings in the application software to make them identical with those in the printer driver or vice versa, and repeat the print job from the application software.

- ☐ The print job has been canceled before completion in the application software on your computer.

Action > Turn off the main power switch of your RISO printer. After approximately 10 seconds, turn it on again.

Unexpected Print Result _____

Problem	Cause / Condition and Action
Graphics cannot be printed properly.	<ul style="list-style-type: none"><input type="checkbox"/> The current [RISO...] printer driver was not selected as active when editing graphics. Action Select the current [RISO...] printer driver and edit graphics again because graphics may not be printed properly if they are edited with another printer driver selected.<input type="checkbox"/> The specified custom paper size was so large that unexpected margins were assigned on a page. Action Select another paper size or specify the custom paper size within the valid range.
Some fonts cannot be printed properly.	<ul style="list-style-type: none"><input type="checkbox"/> The [Use Printer Font] option is selected in the application software. Action Cancel the [Use Printer Font] option in the application software.
The page image is not centered or is clipped at an edge.	<ul style="list-style-type: none"><input type="checkbox"/> The paper size setting in the application software is not identical with that in the printer driver. Action Make both paper size setting identical.<input type="checkbox"/> The print area specified in the application software is beyond the maximum print area of your RISO printer. Action Increase the border margins in the application software to contain the page image within the printable area of your RISO printer.<input type="checkbox"/> There is something wrong with the Print cylinder (drum) in your RISO printer. Action Check your RISO printer, referring to the dedicated user's guide.

Unexpected Action ---

Problem	Cause / Condition and Action
Your RISO printer repeats the master-making process for each copy of the identical page.	<ul style="list-style-type: none"><input type="checkbox"/> The [Collate] check box is selected in the [Print] dialog box in the application software.Action > Cancel the current print job on your computer and turn off the main power switch of your RISO printer. After approximately 10 seconds, turn it on again. Always cancel the [Collate Copies] or [Collate] option in the [Print] dialog box when starting a print job.
Your RISO printer does not operate as specified in the [Sorter Control] option in the printer driver.	<ul style="list-style-type: none"><input type="checkbox"/> The finishing job specified in the [Sorter Control] option is not available for the current combination of your RISO printer and an optional sorter.Action > Refer to the dedicated user's guides of your RISO printer and the optional sorter.

Unable to Specify Settings _____

Problem	Cause / Condition and Action
A name cannot be entered in the dialog box to register the custom paper size. (Windows)	<ul style="list-style-type: none"><input type="checkbox"/> The name is too long for the corresponding field.Action Enter the name whose length is within the valid range. (See p.21)
A desired value cannot be entered in the corresponding fields to register the custom paper size.	<ul style="list-style-type: none"><input type="checkbox"/> The value does not fall within the range.Action Enter the value within the valid ranges into the relevant fields. (Windows – p.21, Mac OS 9 – p.49, Mac OS X – p.75)
The custom paper size cannot be registered in the [RISO...] printer driver.	<ul style="list-style-type: none"><input type="checkbox"/> The relevant dialog box was not closed correctly.Action Add the desired custom paper size in the relevant dialog box ([Custom Paper List] for Windows or [Paper Editor] for Macintosh) once more, and then click on the [OK] or [Save] button before closing the dialog box.
The specified custom paper size cannot be selected in the application software.	<ul style="list-style-type: none"><input type="checkbox"/> [Custom] is not selected in the [Paper Size] option in the [Properties] dialog box of the printer driver.Action Select [Custom] in the [Paper Size] option.<input type="checkbox"/> [Paper Size: Custom] cannot be selected in the [Printer Setup] dialog box in the application software.Action Specify a standard paper size which is larger than the specified custom one.